

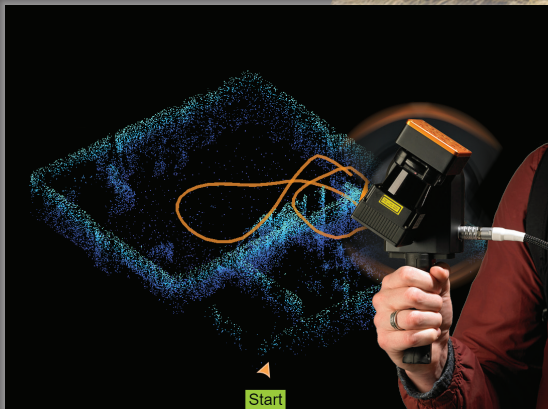
GeoSLAM ZEB-REVO Presentation

"Go-Anywhere" Mobile Mapping



ND | SD | MN | CO | AK | MT | ID | HI | WY | UT | OR | WA
AN EMPLOYEE-OWNED COMPANY

**Fast.
Simple.
Mobile.
Reliable.**



**Bismarck State College
Basic Electric Power Cooperative Auditorium
Room 304 | February 1, 2018
9:00 am to 11:30 am | REGISTER HERE**

** Although the room is on the 3rd floor, we encourage use of the south parking lot due to the parking crunch on the north side of the building. Participants can enter on the 1st floor on the south side and take the stairs or elevator to 3rd floor.*

Want More Information? Contact:
Nathan Kupfer or Danielle Moe | Geospatial Sales Representatives
nathank@frontierprecision.com | dmoe@frontierprecision.com
2020 Frontier Drive | Bismarck, ND 58504
701.222.2030 or 800.359.3703 [Toll Free]
Fax: 701.258.5324

Introducing the GeoSLAM ZEB-REVO Lightweight Revolving Laser-Scanner

Handheld, or pole-mounted, and pass through your target survey environment to record more than 40,000 measurement points/second!

Adaptable to any environment in all industries, especially complex and enclosed spaces, without the need for GNSS. The resulting 3D Point Cloud can be used to create 2D layouts or 3D models in industry standard CAD and point cloud post-processing software.