

MAPSMART[®]

FIELD DATA COLLECTION

- + Overcoming Challenges
- + Uses and Applications
- + Complete Laser Packages
- + Collecting Data Your Way
- + Real-Time Calculations
- + Stockpile Volume Upgrade



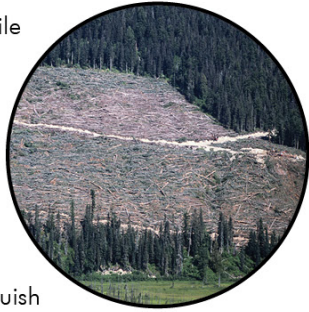
www.lasertech.com

 **LASER_{TECH}**
TECHNOLOGY
Measurably Superior[®]

Overcoming Challenges

LTI's MapSmart field data collection software is designed for anyone who needs to quickly and accurately map in the location of features in 3-D or measure stockpile volumes.

- Simplifies field measurement for mobile mapping, GIS/GPS data collection, and more
- Increases field work efficiency and reduces major safety liabilities
- Displays helpful tips and reminders throughout the program
- Uses color-coded point, line, curve and area feature types to help distinguish features easily



Complete Laser Packages

Whether it is about functionality or accuracy, there is a TruPulse laser that will fit your specific needs.

TruPulse® 360°

- Includes a built-in compass
- Calculates horizontal distance, height and 3-D missing line values
- Sets up quicker and requires fewer steps for traversing



Uses & Applications

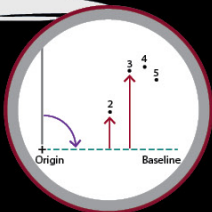
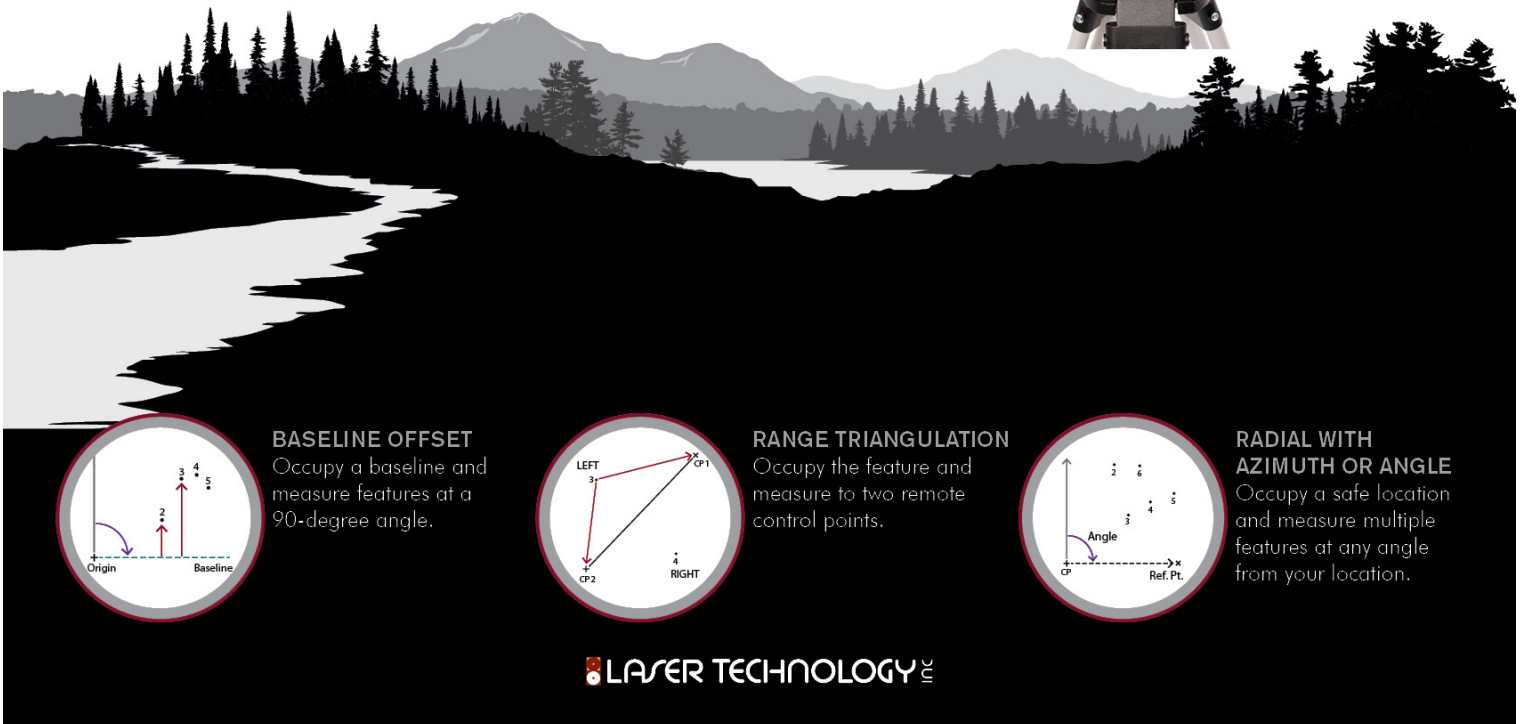
MapSmart is used by professionals in a wide variety of industries around the world, including:

- Forestry
- Natural Resource Management
- Archeology
- Government
- Construction and Mining
- Telecommunications
- Public Works
- Utilities
- Military

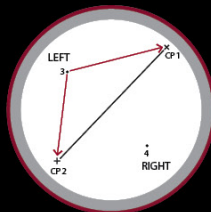


TruPulse® 200X + MapStar® TruAngle®

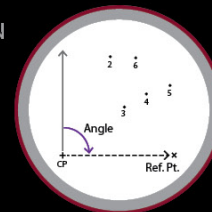
- Achieves the highest distance and inclination accuracy
- Calculates precise horizontal angles
- Unaffected by local magnetic interference so it can be used in any environment



BASILINE OFFSET
Occupy a baseline and measure features at a 90-degree angle.



RANGE TRIANGULATION
Occupy the feature and measure to two remote control points.

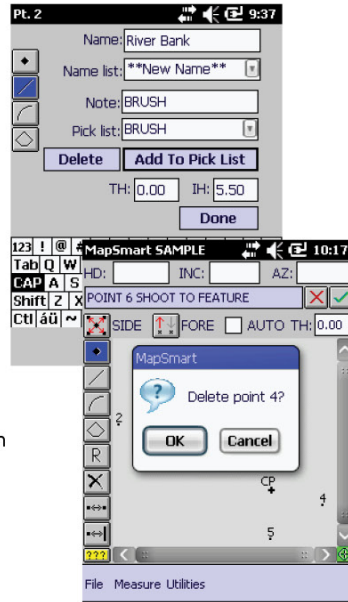


RADIAL WITH AZIMUTH OR ANGLE
Occupy a safe location and measure multiple features at any angle from your location.

Collecting Data Your Way

MapSmart is adaptable to your needs and parameters.

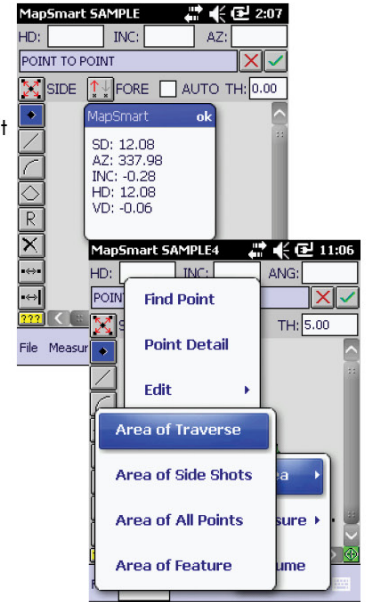
- Offers four data collection methods for flexibility in your specific situation
- Allows you to build your own note description pick list in the field or on your PC to save time
- Enables you to review, reshoot and edit any measured feature in the field to ensure data integrity



Real-Time Calculations

When time is money, you can't beat real-time data.

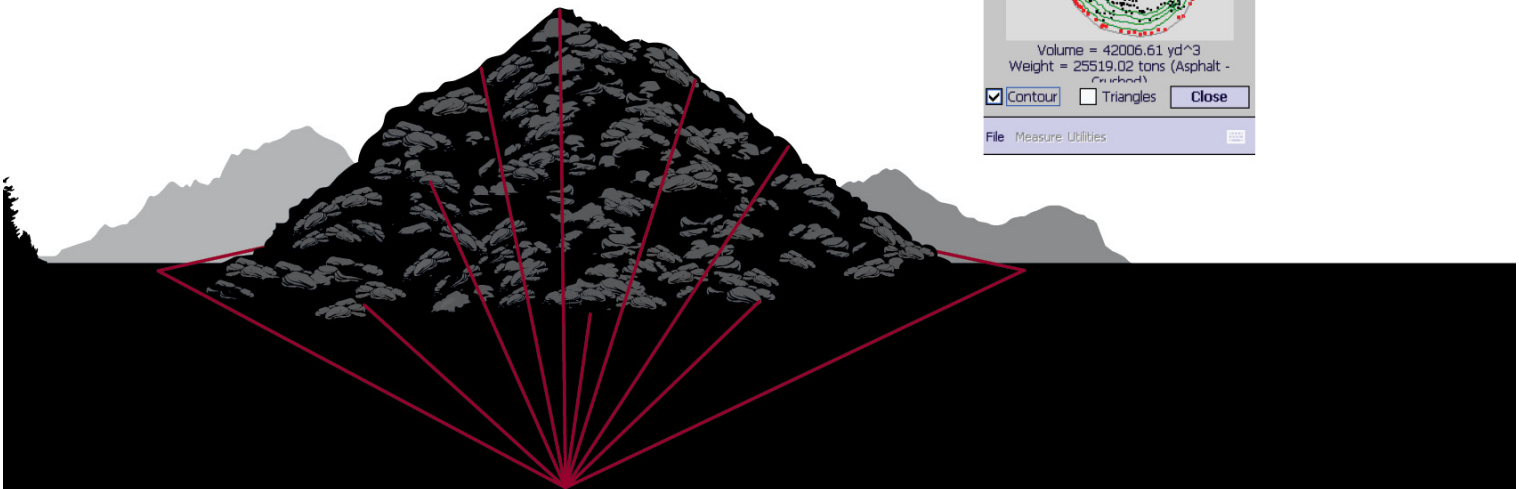
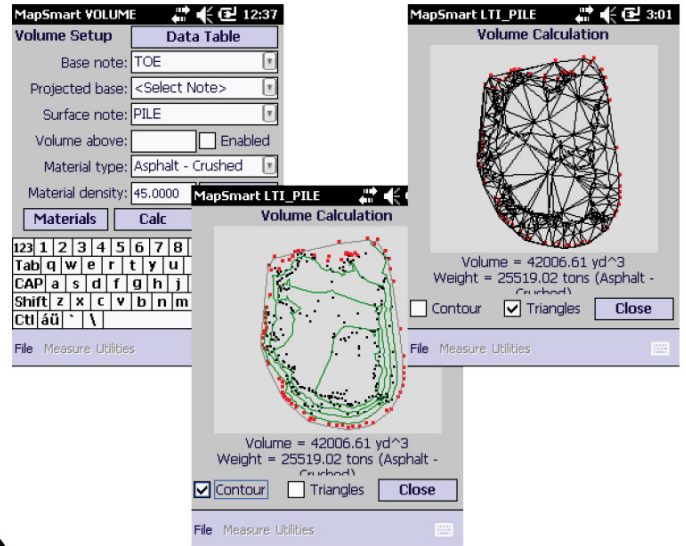
- Displays the measurement values between any two points or from any point to any line you collected
- Calculates distances and areas of any boundary or group of features
- Generates a closure ratio to verify the accuracy of your traverse



Stockpile Volume Upgrade

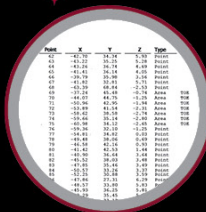
Now you can measure and calculate the stockpile volumes and tonnage of any material, even if stored in a bin or up against a wall.

- Eliminates guesswork, so you know exactly what you have on hand
- Saves time, money and resources when you track inventory yourself
- Collects measurements from a safe location instead of requiring you to occupy loose and potentially dangerous material



SAFETY FIRST

Reflectorless pulse-laser technology allows you to stand clear of occupying loose aggregate or other dangerous areas.



EASY DATA TRANSFER

Import your field data into Excel or any CAD program for professional reporting purposes.



DATA COLLECTOR COMPATIBILITY

MapSmart works on any QVGA or VGA display Windows Mobile 6.0 or newer version mobile device.

Software Specifications

MapSmart	
PC Requirements (for installation on a data collector)	Microsoft® Windows® Vista, Windows 7 or Windows 8, with Windows Mobile Device Center installed or Windows XP with Microsoft ActiveSync installed
Mobile Device Requirements (Does not support smart phones running Windows Mobile or data collectors running Windows Mobile 5)	Microsoft Windows Mobile 6.0 or greater 300 KB memory for application Display Resolutions: QVGA (320x240) or VGA (640x480)
Connectivity	Connection cable or Bluetooth®
Hardware	Most Laser Technology, Inc. TruPulse® or Impulse 200 laser models; LTI MapStar® TruAngle®
Supported Languages	English, Chinese, Croatian, French, German and Spanish; templates available for additional translations

Laser Specifications



	TruPulse® 200/B	TruPulse® 200X	TruPulse® 360°/B	TruPulse® 360°R
Measures Azimuth with TruVector Compass Technology	No	No	Yes	Yes
Distance Accuracy to Typical Targets	± 30 cm (1 ft)	± 4 cm (1.6 in)	± 30 cm (1 ft)	± 30 cm (1 ft)
Inclination Accuracy	± 0.25° Typical	± 0.1° Typical	± 0.25° Typical	± 0.25° Typical
Max Range to Reflective Targets	2000 m (6,560 ft)	2500 m (8,200 ft)	2000 m (6,560 ft)	2000 m (6,560 ft)
Max Range to Non-Reflective Targets	1000 m (3,280 ft)	1900 m (6,233 ft)	1000 m (3,280 ft)	1000 m (3,280 ft)
Bluetooth® Com Port	B model has Android	iOS and Android	B model has Android	Android
Scope Magnification / In-Scope Display Type	7× / LCD	7× / LED	7× / LCD	7× / LCD
Waterproof / Environmental	No / IP54	Yes / IP56	No / IP54	Yes / IP56
Size L x W x H	12 x 5 x 9 cm (5 x 2 x 3.5 in)	13 x 5 x 11 cm (5.2 x 2.1 x 4.5 in)	12 x 5 x 9 cm (5 x 2 x 3.5 in)	13 x 5 x 11 cm (5.2 x 2.1 x 4.5 in)
Weight	285 g (10 oz)	382 g (13.5 oz)	285 g (10 oz)	385 g (13.6 oz)
Available Colors	Yellow Grey	LTI Red	Yellow Grey	Black

© LTI 2015 1304 EN

