

SENSORS & SOFTWARE®  
from RADIODETECTION



# Locate Performance Management EKKO\_Project™ GPR Software

Visualize.  
Understand.  
Report.

SPX  
TECHNOLOGIES

Information requires interpretation: Transform GPR data into informed decisions

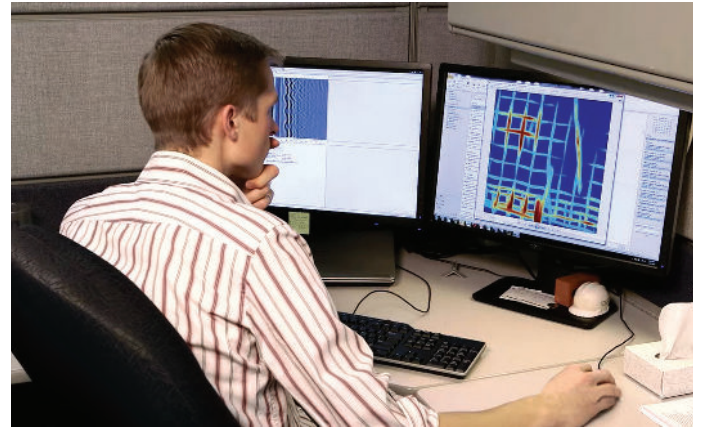
# Locate Performance Management

Accuracy begins with using best-in-class GPR hardware, backed by robust software, to leverage a fully integrated end-to-end solution.

## Locate Performance Management

is a suite of Radiodetection software solutions that help locate and protect underground assets.

The newest addition, EKKO\_Project™, is designed to empower utility locators, concrete scanners, archaeologists, law enforcement, geoscientists, environmental scientists, geotechnical engineers, and others to visualize GPR data and turn it into usable information and reports.



Not knowing what lies beneath the surface increases project risks, such as:

- The potential to damage critical infrastructure, cultural assets, or other buried objects
- Unknown conditions can lead to costly damages, scope changes, delays, or rework
- Maps, documentation, and as-built designs can lack sufficient detail or be inaccurate. Proceeding without knowing what's below can result in injury to people, environmental damage, or devastating societal consequences

Analyzing GPR data with EKKO\_Project helps to reduce project risk and complete projects safely and efficiently.



# Why use EKKO\_Project?

## Seamlessly move GPR data from field to final results.

EKKO\_Project is GPR processing and reporting software that makes powerful GPR analysis simple - giving you more time to interpret the data, extract your insights, and drive informed decisions for your project.

With its focus on visualizing, understanding, and reporting GPR subsurface information, EKKO\_Project is a critical tool for companies seeking to know what's below, reduce project risks, and better manage and protect underground assets.

### BENEFITS OF EKKO\_Project



#### Data Management

A single file retains all field interpretations, geospatial data, and view settings. Spend less time managing data and more time understanding it



#### Save Time with an Easy Workflow

Navigate project data, add notes and interpretations, and see different visualizations to analyze your GPR survey quickly & efficiently



#### Location

Multiple positioning options (GPS, Latitude-Longitude, UTM, Local XY, grids, pseudo grids) provide a spatial view of your entire project space



#### Depth

Estimate the distance from the surface to the top of the object, typically within 10% accuracy, and visualize it in relation to other objects in your project space



#### Enhanced Analysis

Visualize GPR data in more ways, increase your understanding of results, help find subtle targets in the subsurface that are not always apparent



#### Mapping

Map survey paths, turn interpretations into usable insights and reports, and export in many formats to suit your project and audience



#### High Quality Reports

Easily create professional reports that can help market your services and present your results



#### Install Best practices

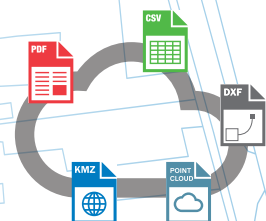
Evaluate results, learn from findings, use this information to provide feedback to data collection teams, and improve field collection practices



#### Document & Archive Project Data:

For reference in future projects or risk mitigation, easily revisit your analysis, see where you collected data, and view or edit reports by opening a single project file

### TRANSFER GPR DATA SEAMLESSLY FROM FIELD TO DESKTOP TO FINAL RESULTS



Data collected on the GPR system is exported in a single GPZ file with all data and field information included.

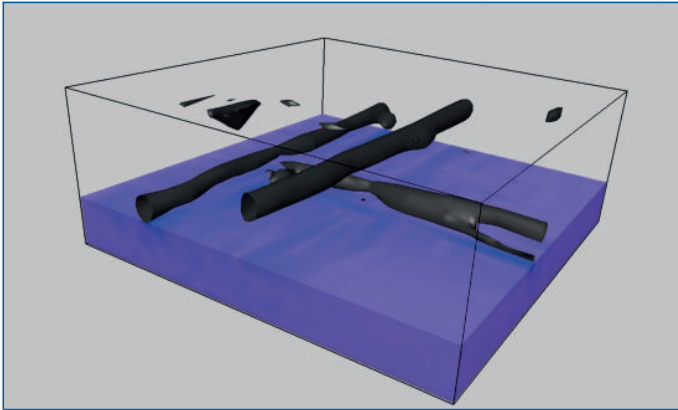
Project is opened and all field information is visible, allowing you to turn data into insights

Export results in many formats for reporting, mapping, sharing & archiving results.

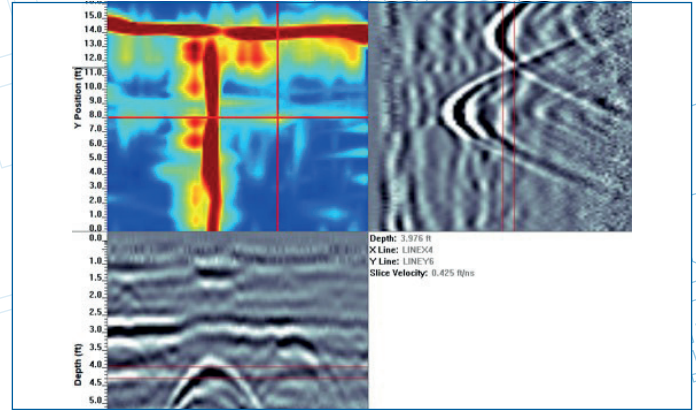
# Visualize

## Reveal subsurface secrets through visualization.

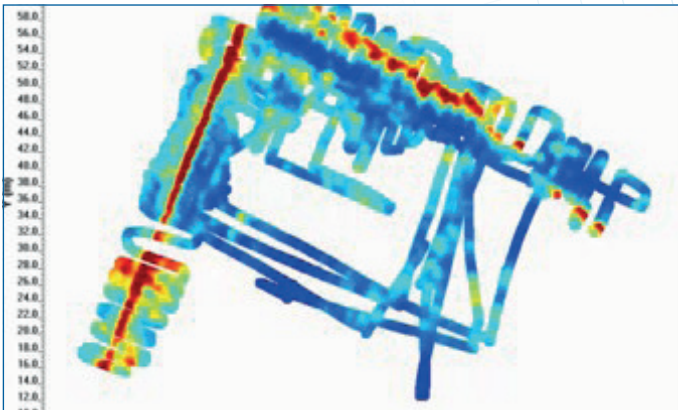
EKKO\_Project enables you to view your GPR data through different lenses, enhancing your understanding of the data, and helping to reveal subtle information. By visualizing data in different ways, you can understand and communicate your findings.



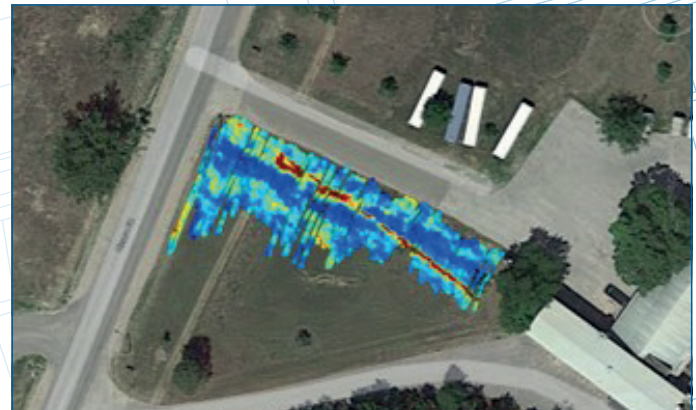
**3D Volume** of grid data



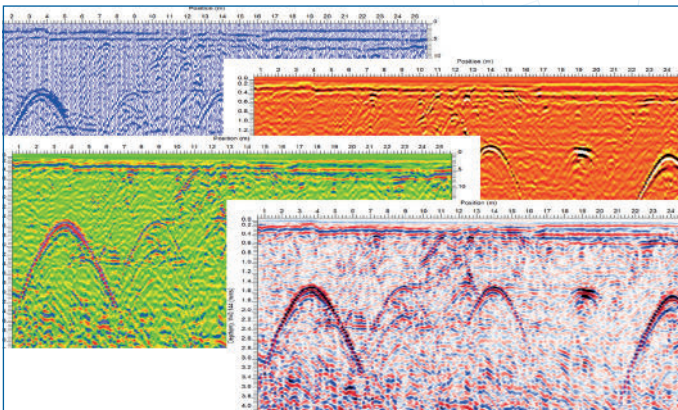
**3D Preview** combine cross sections & depth slices



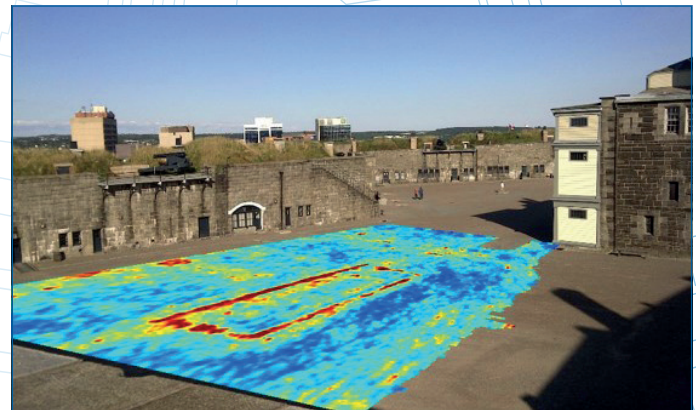
**Depth Slices** with Autogain



**GeoTIFF Images** geo-referenced depth slices



**Cross Sections** with Autogain

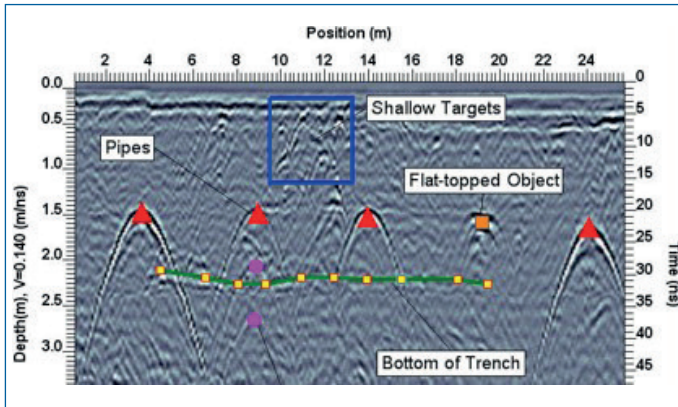


**PhotoSlicer** Superimpose depth slices onto site photos

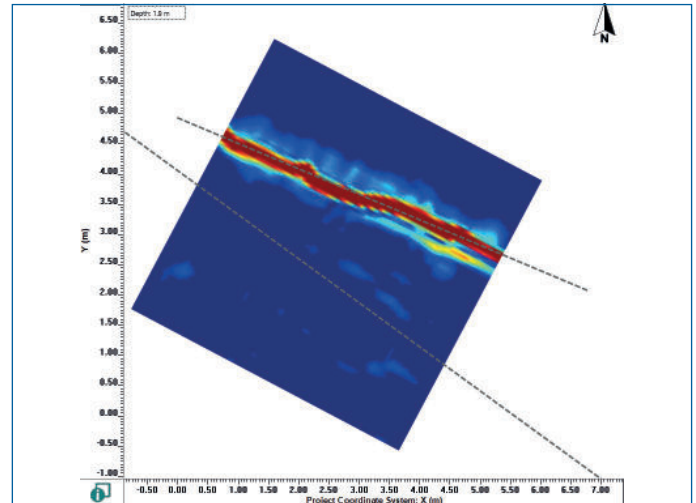
# Understand

## There is no information without interpretation.

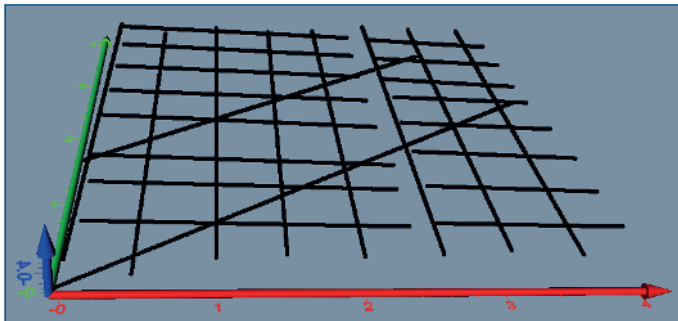
Understanding your GPR data requires interpretation. Adding interpretations to your cross-sections, depth slices and 3D visualizations is easy to do and builds a clear picture of the subsurface, allowing you to extract valuable insights & enable informed decisions.



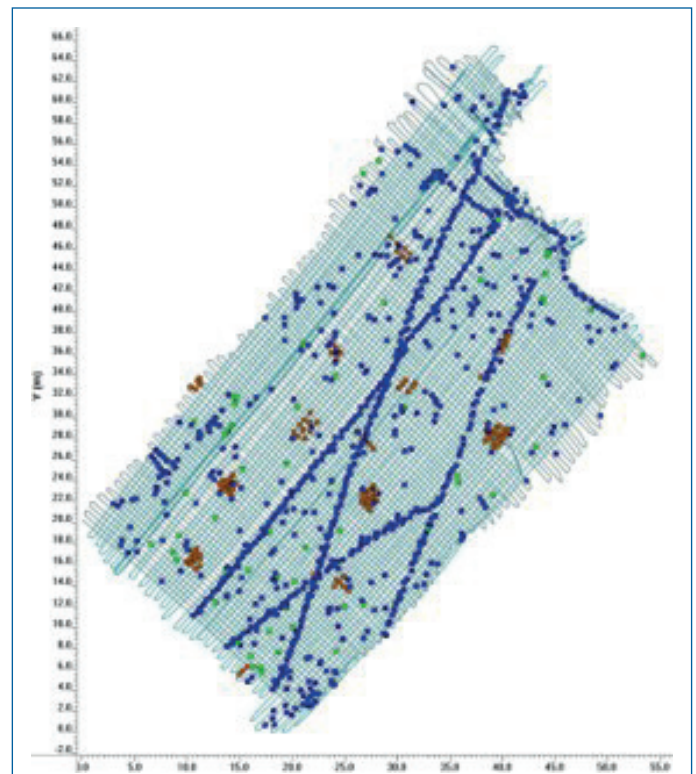
Add **point, polyline, box and annotation** interpretations to GPR cross-sections.



Draw MapView interpretations on linear **objects** revealed in depth slices.



Gain more insight by **plotting point interpretations in 3D**, allowing full 360-degree rotations to understand your targets even better.



Display your GPS path in a map view and plot interpretations to reveal patterns and **gather insights into subsurface objects**.

EKKO\_Project outputs your GPR analysis and interpretation in many popular formats. From customizable PDF reports, to 3D visualizations and animations, to point clouds, GIS mapping and geospatial databases, EKKO\_Project provides a simple way to go from field data to final report.



# EKKO\_Project Bundles

## Go from site to insight with EKKO\_Project PC Software

	Features	Core	Examine	Reveal	3D Reveal	Suite	3D Suite
Basic GPR Data Analysis	GPR Project (GPZ) data organization	✓	✓	✓	✓	✓	✓
	View GPR Line Scans with Autogain	✓	✓	✓	✓	✓	✓
	Create Reports	✓	✓	✓	✓	✓	✓
	MapView Display	✓	✓	✓	✓	✓	✓
	View Depth Slices processed in the field	✓	✓	✓	✓	✓	✓
	Add MapView Interpretations to field-processed depth slice	✓	✓	✓	✓	✓	✓
	Background Image in MapView	✓	✓	✓	✓	✓	✓
	3D Preview	✓	✓	✓	✓	✓	✓
	PhotoSlicer	✓	✓	✓	✓	✓	✓
	Edit Grids	✓	✓	✓	✓	✓	✓
	Export field interpretations to CSV	✓	✓	✓	✓	✓	✓
	Export data to other formats	✓	✓	✓	✓	✓	✓
2D Cross-sections	Optimize Line Scans		✓	✓	✓	✓	✓
	View multiple lines simultaneously		✓	✓	✓	✓	✓
	Launch Google Earth™ to show target position		✓	✓	✓	✓	✓
Interpretation	Add Interpretations to Line Scans		✓	✓	✓	✓	✓
	Add media files to flags		✓	✓	✓	✓	✓
2D Depth Slices	Process Grids to Depth Slices			✓	✓	✓	✓
	Process depth slices not processed in the field			✓	✓	✓	✓
	Process Lines into Depth Slices			✓	✓	✓	✓
	Add MapView Interpretations to Depth Slices			✓	✓	✓	✓
	Save Grid data in 3D Format			✓	✓	✓	✓
3D	3D Visualization of Grid Scan data				✓		✓
	3D visualization of Point interpretations				✓		✓
Advanced Processing	Processing (Advanced Filtering, Migration, etc.)					✓	✓
	Batch processing of lines based on a Recipe					✓	✓
Specialized Modules	Bridge Deck Condition Report		*	*	*	*	*
	Pavement Structure Report		*	*	*	*	*

\* Optional module available for indicated bundles



## Our Mission

Provide best in class equipment and solutions, to prevent damage  
to critical infrastructure, manage assets and protect lives.

## Our Vision

To be the world's leader in the management of critical infrastructure and utilities.

## Our Locations



### USA

Raymond, ME  
Kearneysville, WV

### Canada

Mississauga, ON



### Europe

United Kingdom **HQ**  
France  
Germany  
The Netherlands



### Asia Pacific

India  
China  
Hong Kong  
Indonesia  
Australia

[www.sensoft.ca](http://www.sensoft.ca)



**FRONTIER PRECISION**  
G E O S P A T I A L  
sales@frontierprecision.com  
[www.frontierprecision.com/solutions/geospatial](http://www.frontierprecision.com/solutions/geospatial)

CONTACT US

