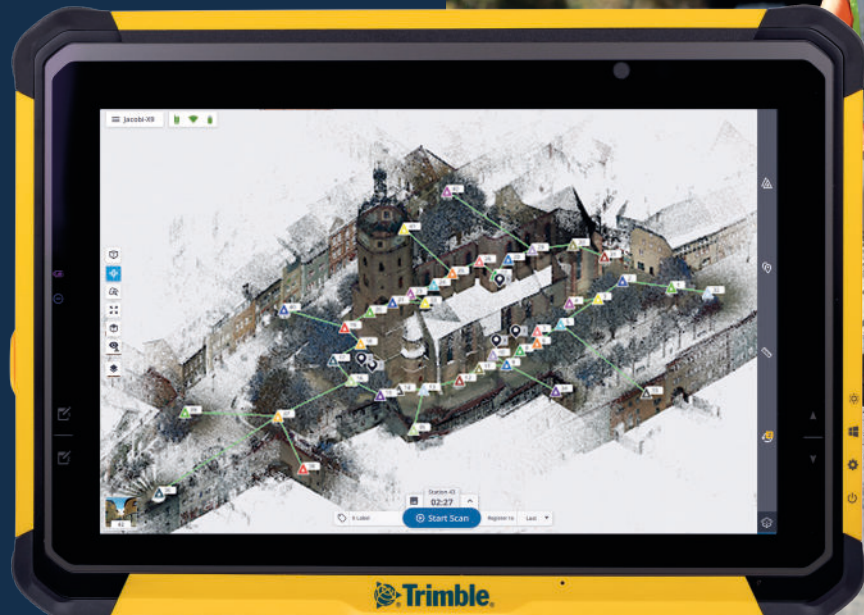


# Trimble T10x

TABLET

Confidently tackle large  
scanning datasets  
and workflows.



## Powerful tablet for processing intensive scanning projects

### Powerful

High-performance, energy-efficient Intel® 13th Generation Core i7 series processor.

1 TB of storage, ideal for process-intensive scanning tasks.

32 GB internal memory.

### Efficient

High capacity, field-swappable battery.

Sunlight readable 10.1 inch capacitive touch screen for indoor and outdoor use.

Slim, lightweight and durable form factor.

### Productive

Optimized for use with Trimble® Perspective scanning software.

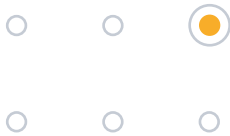
Handle large amounts of data, increasing overall scanning productivity.



Find out more at:  
[geospatial.trimble.com/t10x](https://geospatial.trimble.com/t10x)

# Trimble T10x

Tablet



STANDARD FEATURES
SYSTEM
Intel 13th Gen Core i7 Processor
32 GB RAM
Memory: 1 TB Storage <sup>1</sup>
10.1 in (256 mm) LCD Screen
8 MP rear camera
OPERATING SYSTEM
Microsoft® Windows® 11 IoT Enterprise
COMMUNICATIONS
Bluetooth® v5.3
Wi-Fi 802.11ax
USB 3.0 Type A, USB-C
STANDARD ACCESSORIES
Active stylus
Hand strap
AC-DC power adapter with cord
Screen protector
OPTIONAL ACCESSORIES
Shoulder strap
Carry case
Single battery charger kit
Active stylus
Hot-swappable batteries

TECHNICAL SPECIFICATIONS	
ENVIRONMENTAL	
Temperature <sup>2</sup>	
Operating	-10 °C to +60 °C (14 °F to 140 °F)
Storage	-55 °C to +70 °C (-67 °F to +158 °F)
Humidity	0%–90% non-condensing MIL-STD-810H, Method 507.6, Procedure II (aggravated cycle)
Water and dust proof	IP65 (with port access doors closed)
Shock, drop	MIL-STD-810H, Method 516.8, Procedure-I, IV

TECHNICAL SPECIFICATIONS	
INPUT/OUTPUT	
User Interface	Power button, programmable function keys, battery status system LED, display brightness interface
Display	LED backlight, scratch-resistant
Size	256 mm (10.1 in) multi-touch
Resolution	1920 x 1200 px
Brightness	800 Nits
Audio	Built in microphone and speaker
I/O	USB-C with PD charging, USB 3.0 Type A
Digital camera	8 MP (rear-facing)
PHYSICAL	
Size	7.8 x 11 x 0.79 in (198 x 279 x 20 mm) HxWxD
Weight	1.4 kg (3.1 lbs)
Battery	8000 mAh hot-swappable <sup>3</sup>
AC/DC ADAPTER	
Input	100–240 V AC
Output	20 V, 3.25 A, 65 W, Type-C
GNSS	
GPS, QZSS, GLONASS, Galileo, BeiDou	

1 Total useable memory will be less depending on actual system configuration.  
2 For battery safety and optimal functionality and performance, the recommended usage temperature range is from -10 °C to +45 °C (14 °F to 113 °F).  
3 Battery operation and recharge times will vary based on many factors including screen brightness, applications, features, power management, battery conditioning and other settings and preferences.

Specifications subject to change without notice.





**FRONTIER PRECISION**  
**G E O S P A T I A L**  
sales@frontierprecision.com  
www.frontierprecision.com/solutions/geospatial

Contact your local Trimble Authorized  
Distribution Partner for more information.

**NORTH AMERICA**  
Trimble Inc.  
10368 Westmoor Dr  
Westminster CO 80021  
USA

**EUROPE**  
Trimble Germany GmbH  
Am Prime Parc 11  
65479 Raunheim  
GERMANY

**ASIA-PACIFIC**  
Trimble Navigation  
Singapore PTE Limited  
3 HarbourFront Place  
#13-02 HarbourFront Tower Two  
Singapore 099254  
SINGAPORE

