

# LMX200™

## UTILITY LOCATING WITH GPR MADE SIMPLE

**SENSORS & SOFTWARE®**  
from **RADIODETECTION**

**Rapidly locate metallic and non-metallic utilities.**



LMX200™ GPR complements traditional pipe and cable locators and allows you to locate and map targets below the surface.

- Metal utilities, including pipes and cables
- Non-metallic pipes, including PVC and asbestos cement
- Concrete storm and sewer systems
- Utilities where installed tracer wiring has failed
- Underground storage tanks and drainage tiles
- Septic system components
- Non-utility structures such as vaults, foundation walls and concrete pads

**LMX200™**  
**Features unlocked with external GPS.**



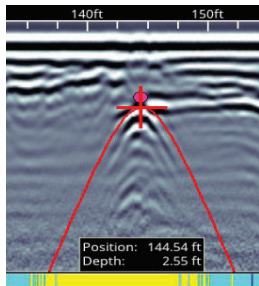


# LMX200™ Features

## Enhance Your Productivity

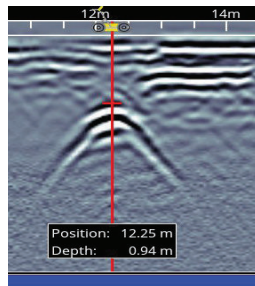
No complex settings – Just press Start and push the cart.

### Easy Depth Calibration

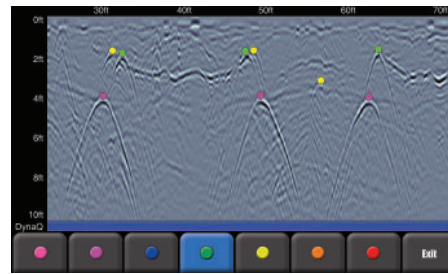


Use hyperbola-fitting to ensure accurate depth measurements and backup over the target to display its location and depth.

### Pinpoint Depth & Location



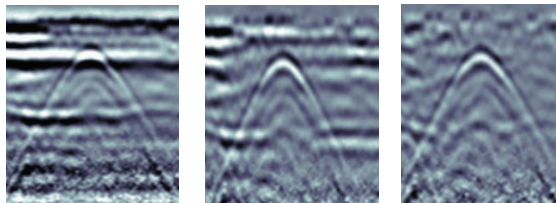
### Color-Coded Field Interpretations



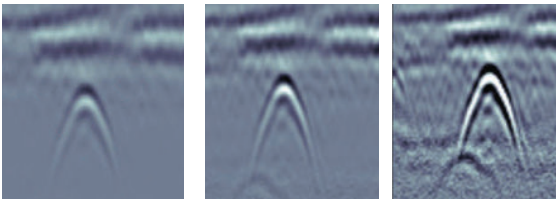
Classify your targets in real-time by selecting a color option and touching the screen.

## Increase your target confidence in the field with image optimization.

### Preset Filters

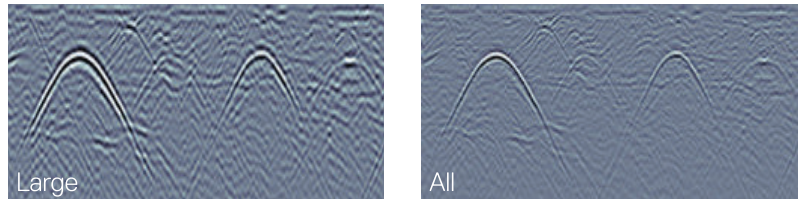
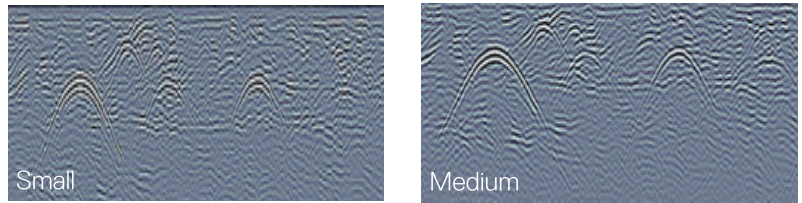


### Adjustable Gain



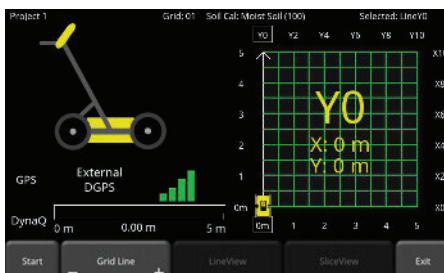
Optimize visibility of your targets with preset filters & gain.

### Dynamic Target Enhancement (DynaT™)



Enhance small, medium & large targets.

## Grids & Depth Slices

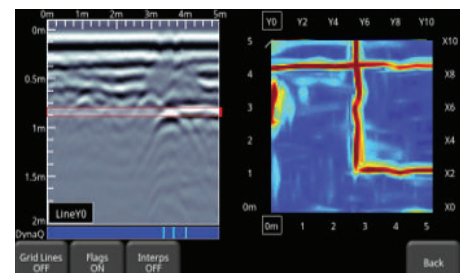
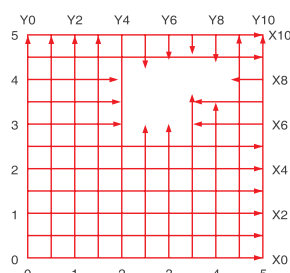


### Flexible & Guided Grid Collection

The LMX200™ guides you through setup with pre-selected grid sizes. Stop lines early, or skip lines.

### Obstacle Avoidance

System guides data collection around an obstacle in your grid.



### In-field Depth Slices

Process grid data into depth slices and move down through your data to visualize targets at different depths. Depth Slice through multiple grids on-site.