

Installing Trimble® Positions™ Desktop Add-in

December 20, 2013

Trimble Positions has multiple parts that need to be installed: the Positions Desktop add-in, Positions Arcpad® or ArcGIS® Mobile Extension. If you are using ArcGIS for Windows Mobile, then you will also need to install the Trimble Positions extension for Mobile Project Center. In this support note we will give you the steps on installing the Positions Desktop Add-in as a single use license. If you are looking for directions on how to install Trimble Positions as a floating license through the license manager please see our support note: [Installing and Setting Up the License Manager for Use with GPS Pathfinder Office®, GPS Analyst™, and Positions™ Desktop add-in.](#)

To install the Trimble Positions Desktop add-in:

1. Download the Trimble Positions Desktop add-in from http://www.trimble.com/mappingGIS/trimblepositions.aspx?dtID=technical_support.

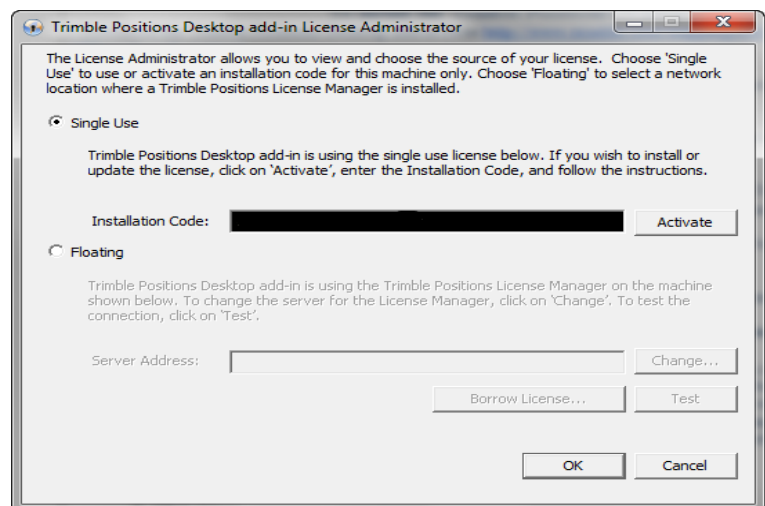
2. If you have an older version of Trimble Positions Desktop Add-in or any version of GPS Analyst installed, you must uninstall it before starting the installation process for Positions Desktop add-in. You will also need to have ArcGIS 10.1 or later installed prior to install the Trimble Positions Desktop add-in.

Note-When installing as a single use license, you do NOT need to install the Trimble Positions License Manager. If you are switching from a floating license to a single use license, make sure to go to Start/ Control Panel/ Add or Remove Programs and uninstall the license manager if it is installed to the same computer as the software.

3. Run the installation file that you just downloaded from the Trimble website. Follow the on-screen instructions to install the Trimble Positions Desktop add-in.

4. Use the *Trimble Positions License Administrator Utility* under *Start / All Programs / Trimble / Trimble Positions Desktop add-in* to license the add-in, by activating as Single-Use license from the Trimble Positions License Manager.

- Select *Single Use* and click *Activate*.
- Insert your Trimble Positions Desktop add-in installation code and select *Next*.
- Choose the option *I wish to activate Trimble Positions Desktop add-in over the Internet* and select *Next*.
- The license will then be activated and you are ready to move on to the next steps. If you have any issues getting the license to activate, please contact your Electronic Data Solutions sales rep for support.



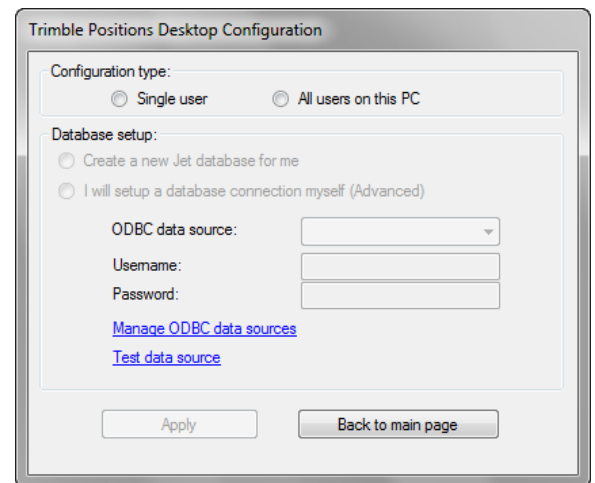
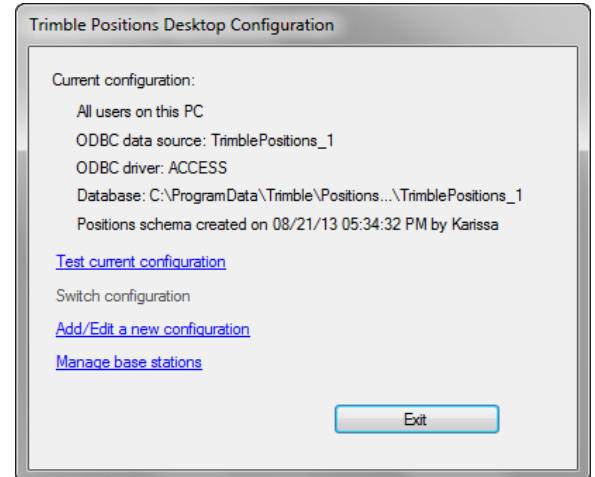
P. O. Box 31, Jerome, ID 83338

Ph: (208) 324-8006 Fax: (208) 324-8015 www.elecdata.com support@elecdata.com

5. Open the *Trimble Positions Desktop Configuration* software. Go to *Start / All Programs / Trimble / Trimble Positions Tools / Desktop Configuration*, and configure your installation.

Note – To change the current configuration, the application must be used with full administrator privileges. If you do not have administrator privileges, most of the application's controls will be disabled.

- Click Add/Edit a new configuration.
- There are two configuration types you can create:
 - Single-user: this profile will be associated with the current user. This is useful when creating a configuration profile that can roam within an organization over many PCs, or when using an infrastructure based on virtual machines or using Citrix.
 - All users on the PC: the configuration profile will be stored locally on this PC and must be manually replicated to other PCs.
- Select either Single-user or All user on the PC then select Create a new Jet database for me.
- Click Apply to create the Jet database.
- Click Test current configuration. If the connection is successful, a message displays informing you that the selected data source is correctly set. If this fails, make sure you have entered the configuration data correctly, and that your database is accessible and running before trying again.
- Click Exit



Note— If you would like to set up a Trimble Position Desktop Configuration yourself, please refer to the Trimble Positions desktop add-in User Guide here <http://trl.trimble.com/docushare/dsweb/Get/Document-693974/PositionsDesktopAddInAdminGuide10201RevA.pdf>.

6. Start ArcGIS for Desktop 10.1.

7. Before you open a Map document (MXD file), make sure that the Trimble Positions Desktop add-in is enabled; on the ArcGIS for Desktop 10.1 menu bar, select *Customize / Extensions / Trimble Positions*.

Note—The ArcPad Data Manager will also need to be enabled to have full functionality of the Trimble Positions Desktop add-in toolbar.

8. The installation for Trimble Positions Desktop add-in is now complete and the installation of the Trimble Positions ArcPad or Mobile extension can be started.