

Reason

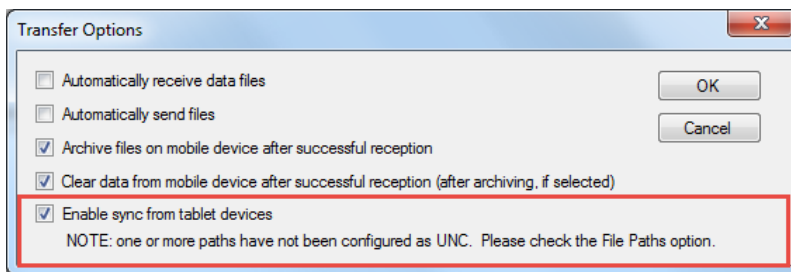
Sentinel GIS supports wireless data transfer from a Windows tablet. This requires turning on the option and configuring some file paths in DataLink GIS, which is covered in this support note.

Before attempting to configure DataLink GIS, you'll need to set up your wireless access point and make sure your Windows tablets can connect to Wi-Fi. Wireless networking details are not covered in this Support Note. If you need help setting up a wireless access point or configuring shared network folders, please contact your IT support.

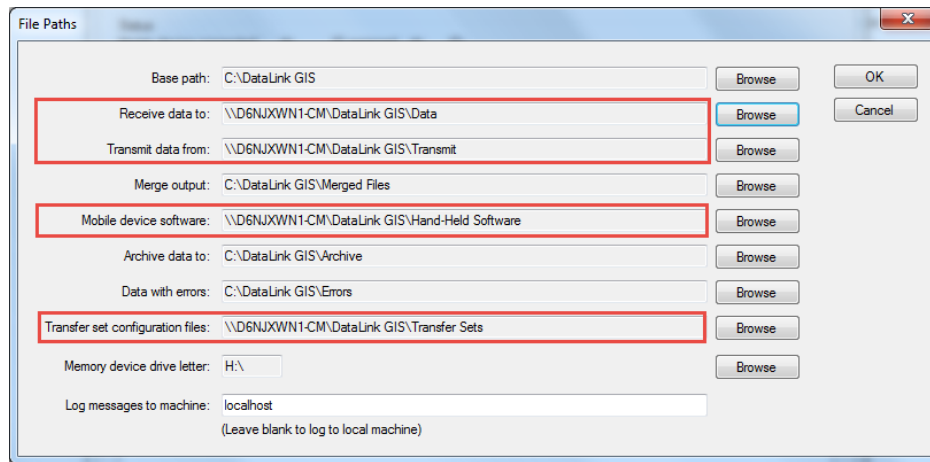
Wireless data transfer is not supported on Windows Mobile devices.

Solution

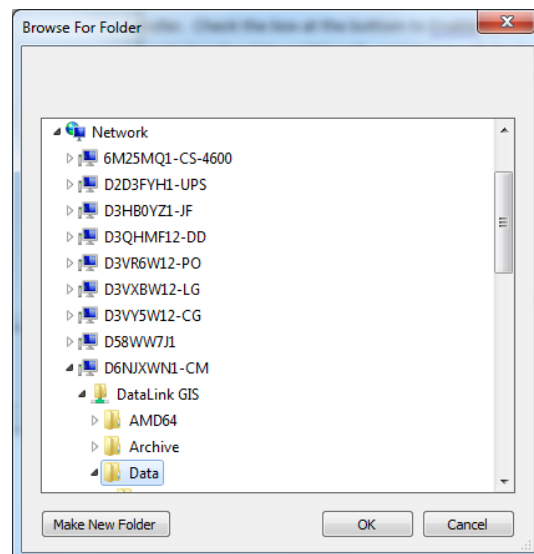
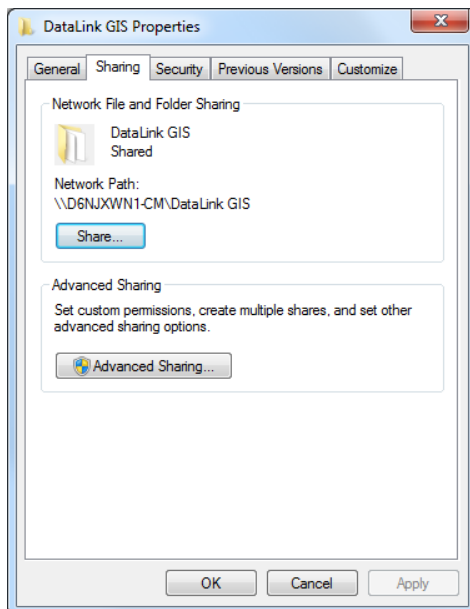
1. In DataLink GIS, open Options > Transfer. Check the box at the bottom to “Enable sync from tablet devices.” If your file paths are not already set to a UNC path, a message will display “NOTE: one or more paths have not been configured as UNC. Please check the File Paths option.”



2. If this message displays, go to Options > File Paths and change the following paths to UNC (UNC is the network path, without any drive letters, as in the screenshot below). You can browse to the UNC path through Network > machine name > file folder.
 - a. Receive data to
 - b. Transmit data from
 - c. Mobile device software
 - d. Transfer set configuration files



3. If the file folders are not on a network location but are on your local computer instead, go to My Computer, browse to the “DataLink GIS” folder, right-click > Properties and set Sharing. After sharing is enabled, you should be able to browse to the folders through Network. *Note: your wireless access point or router will also have to be able to access this network location for wireless transfer to work.*



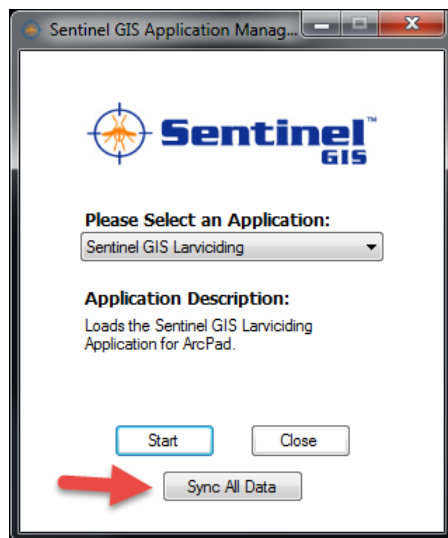
4. Update the layer references for Sentinel data in your existing ArcMap MXD(s) to point to the UNC path if necessary. Remove the Sentinel layers from the map, then for each module, go to Extract. This will add the layers from the new UNC path reference.
5. Do a fresh “Extract” for each Sentinel module. This will update the send-only file lists with the UNC path.
6. Transfer data to your memory devices through DataLink GIS the “old-fashioned way” – connect up the SD

2

154 1st Avenue West, Jerome, ID 83338
 Ph: 208-324-8006 <http://www.frontierprecision.com>

cards or USB drives one by one and let DataLink GIS send and receive files. This will place the updated Sentinel GIS Mobile App Manager on the memory devices. (This is a one-time operation to get the updated Sentinel GIS Mobile App Manager onto the Windows tablet.)

7. Run the Sentinel GIS Mobile App Manager on the tablet.
8. You will now have a new “Sync All Data” button. Tap that button to sync data. Sentinel will attempt to:
 - a. Send any data that’s been collected on the tablet to the configured folder on the network
 - i. Note that Merge does not happen automatically on the PC side, so data from the tablet is not moved into the database automatically. You will have to run Merge manually or set it up to run at a specific time.
 - b. Receive any data updates from the configured folder on the network – this includes updates to configurations, pick lists, or background map layers



9. If there is any error, make sure that you are connected to Wi-Fi and that you can browse to the network folder from the tablet using My Computer (e.g. \\COMPUTERNAME\DataLink GIS\Data).