

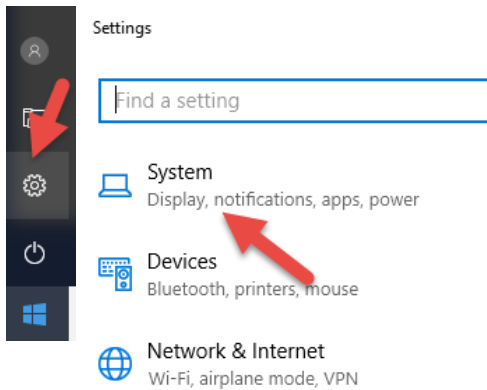
Reason

The Juniper Mesa 2 tablet running Windows 10 comes pre-configured from Frontier Precision with all the settings needed to run Sentinel GIS effectively. These are the settings we pre-configure, in case you need to set them yourself.

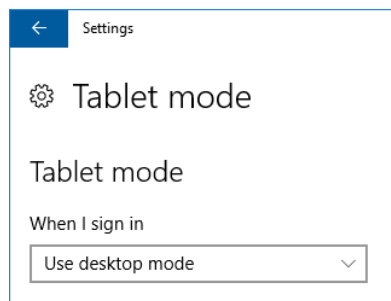
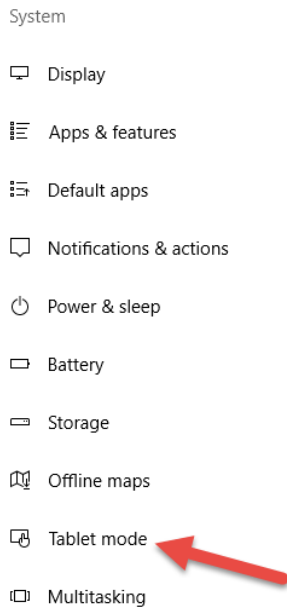
Solution

Configure Windows Settings

1. Go to Settings, then System



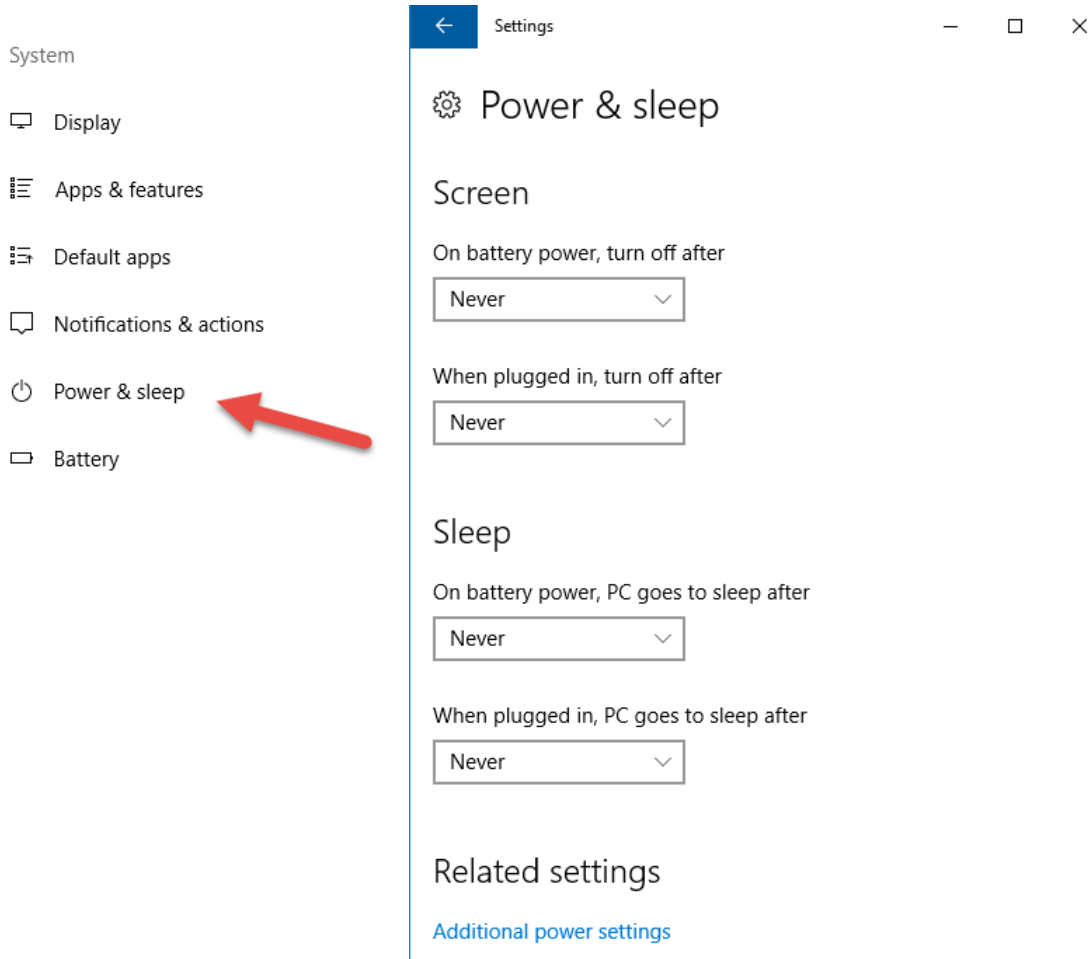
2. Set the default Tablet Mode to Desktop so that app shortcuts will display when you start up



1

154 1st Avenue West, Jerome, ID 83338
Ph: 208-324-8006 <http://www.frontierprecision.com>

3. Change Power settings so the unit doesn't go to sleep in the middle of an Adulticiding spray session especially



4. Change Display settings so that ArcPad drop-downs are easier to select and screens are easier to read
 - a. Select **Advanced display settings** at the bottom of the Display settings screen



- b. Select **Advanced sizing of text and other items**, then **set a custom scaling level**

2

154 1st Avenue West, Jerome, ID 83338
 Ph: 208-324-8006 <http://www.frontierprecision.com>

Related settings

[ClearType text](#)

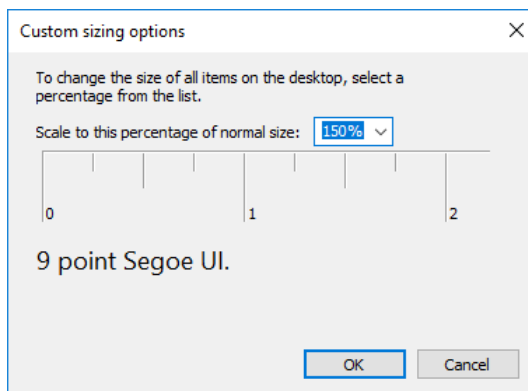
[Advanced sizing of text and other items](#)

[Display adapter properties](#)

Change size of items

To change the size of text, apps, and other items, [use these display settings](#). If you want to temporarily enlarge a portion of your screen, use [Magnifier](#). If neither of these makes the changes you want, you can [set a custom scaling level](#) (not recommended). Setting custom levels can lead to unexpected behavior on some displays.

- c. Set to **150%** of normal size and click OK



- d. Press Apply, then log out and back in

Change size of items

To change the size of text, apps, and other items, [use these display settings](#). If you want to temporarily enlarge a portion of your screen, use [Magnifier](#). If neither of these makes the changes you want, you can [set a custom scaling level](#) (not recommended). Setting custom levels can lead to unexpected behavior on some displays.

Change only the text size

Instead of changing the size of everything on the desktop, change only the text size for a specific item.

Title bars Bold

[Apply](#)

For additional information, see the Support Note *Using a Windows Data Collector*. That Support Note covers setting up DataLink GIS, creating a Sentinel shortcut, and configuring device settings for GPS and serial sprayer connection.

Also see the Support Note *Configuring Wireless Transfer for a Windows Tablet*.

3

154 1st Avenue West, Jerome, ID 83338

Ph: 208-324-8006 <http://www.frontierprecision.com>



Configuring the Mesa 2 for Sentinel GIS

August 15, 2017

