

# EVO Max 4T

Reach New Frontiers



No Blind Spots



Navigation In GPS Denied Environments



IP43 Weather Rating

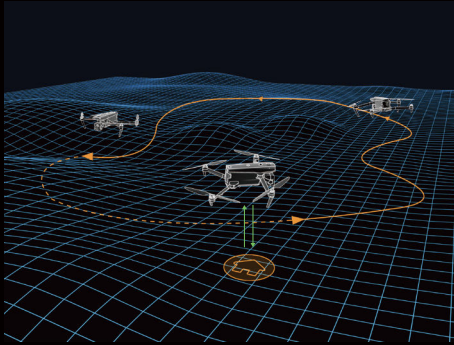


Hot-Swappable Batteries



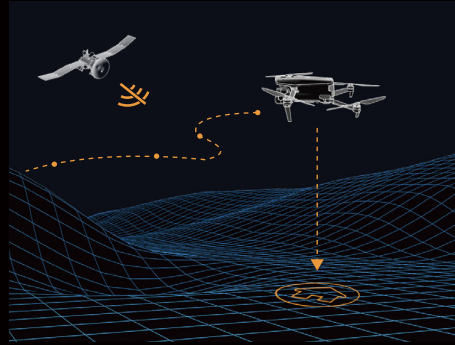
# A Leader Of Drone Intelligence

The EVO Max 4T brings powerful technologies and advanced autonomy to users. EVO Max 4T assesses complex environments to create real-time 3D flight paths for unparalleled obstacle avoidance. Advanced sensors make flight in GPS unavailable areas possible and the incredible new thermal payload unlocks new object identification and tracking scenarios. With a foldable, weather-resistant design, the EVO Max 4T is as portable as it is capable.



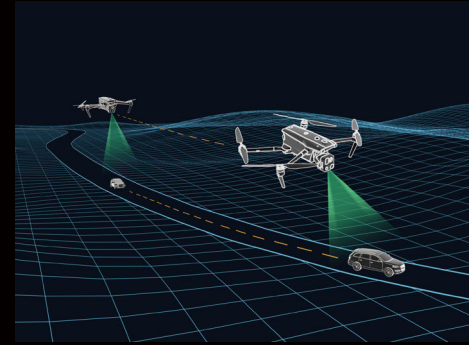
## Autonomous Path Finding

Autel's Autonomy Engine collects surrounding environmental data and plans 3D flight paths through complex environments such as mountains, forests, and buildings. Use cases include rapid 3D scene reconstruction, public safety oversight, industrial inspection, and land surveying.



## Navigation In GPS Denied Environments

Advanced sensors allow the EVO Max 4T to navigate within hardened structures, underground, or in environments without GPS.



## Accurate Object Identification And Tracking

Based on Autel's AI recognition technology, the EVO Max 4T can automatically identify and lock onto different types of targets such as heat sources, moving people, or vehicles and achieve high-altitude tracking and data collection for law enforcement.

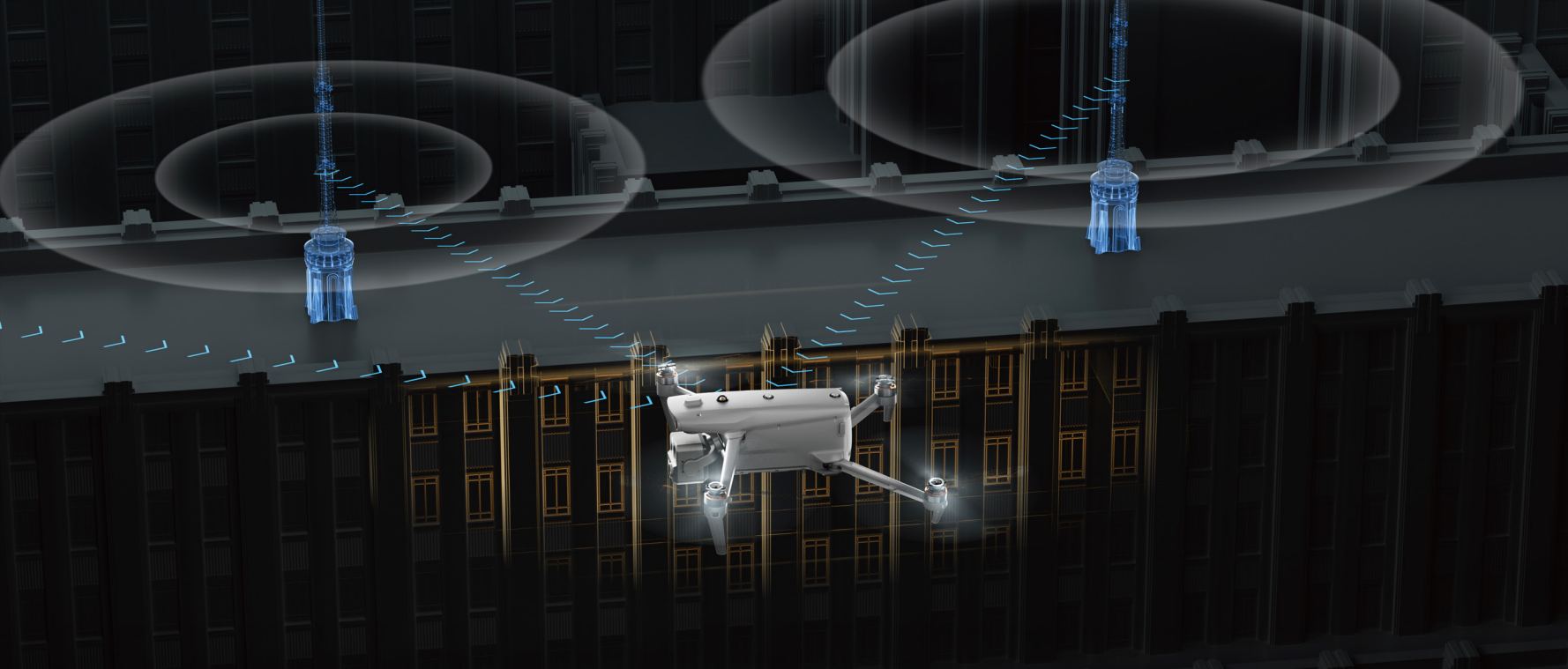
# No Blind Spots

## Ultimate Obstacle Avoidance

EVO Max 4T is the only commercial drone that combines traditional binocular vision systems with millimeter wave radar technology. This allows the EVO Max 4T's onboard Autel Autonomy Engine to perceive objects down to 0.5 inch, eliminating blind spots and enabling operation in low light or rainy conditions.

\*OA performance varies with drone speed, lighting, and flying conditions and is not meant to replace pilot responsibility.





## Anti Jam, Anti Interference

The EVO Max 4T uses advanced flight control modules and algorithms specially designed to counter RFI, EMI, and GPS spoofing. This enables the EVO Max 4T to fly confidently near power lines, critical structures, and in complex areas.

# Platform Capability

EVO Max 4T redefines portability with its powerful platform and all weather design.

**42 mins**

Max. Flight Time

**IP43**

Weather Rating

**27 mph\***

Max. Wind Resistance

**23,000 ft**

Service Ceiling

**12.4 miles**

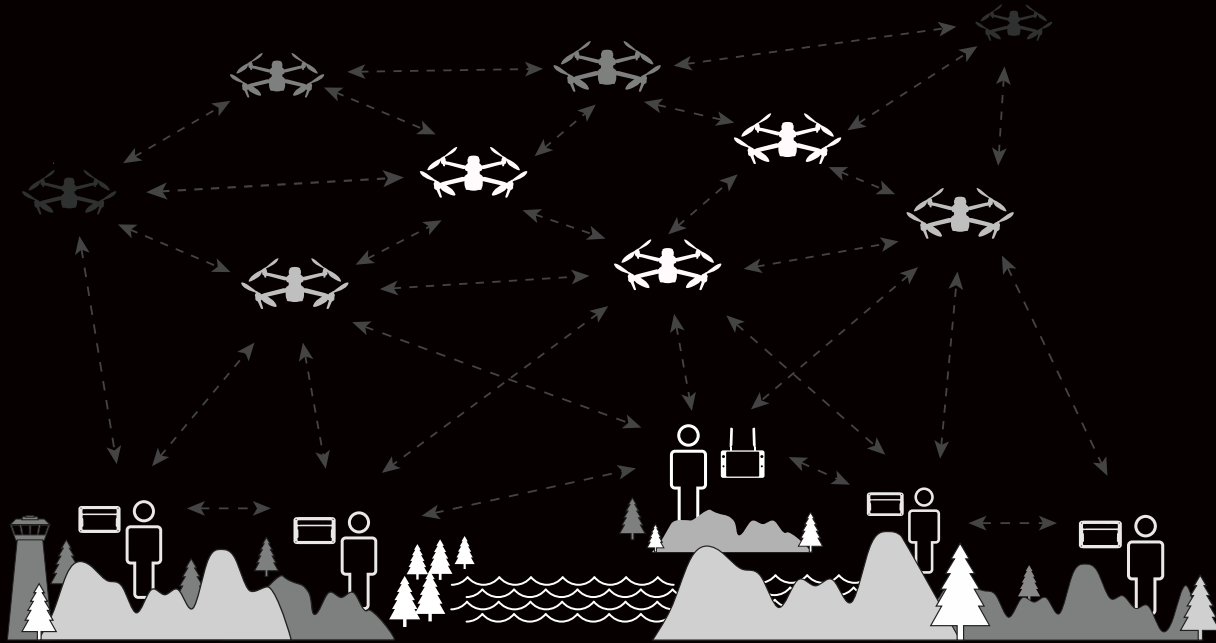
Image Transmission Range



\*Takeoff and landing can withstand wind speeds up to 27 mph (12 m/s).

# A-Mesh 1.0 - The Drone Industry's First Mesh Networking Technology

EVO Max 4T features the new A-Mesh system, enabling drone-to-drone autonomous communication, connection, and collaboration.



# A-Mesh 1.0 - The Drone Industry's First Mesh Networking Technology



## Strong Anti-Interference

The EVO Max 4T can communicate seamlessly with other drones in the vicinity, unlike a traditional chain structure. If a single drone fails or exits unexpectedly, the entire system will independently self-organize and continue to relay critical information.



## Full-Fleet Control

Multiple drones can be controlled autonomously by 1 pilot or by a group of pilots simultaneously with or without LTE coverage.



## Beyond-Line-of-Sight Applications

With A-Mesh, multiple aircrafts in the vicinity can act as relay points to greatly improve BVLOS operation effectiveness.



## Enhanced Range

Communication nodes can be placed statically on hills or poles to provide full coverage to an area, or a swarm of drones can provide mobile communication points to extend the coverage of the entire group.

# Autel SkyLink 3.0

The EVO Max 4T SkyLink 3.0 system comes with 6 antennas, 4 frequency bands, AES-256 encryption\*, and optional 4G integration\* to provide users with the most advanced flight capabilities ever in an EVO.

**12.4 miles**

Image Transmission Distance

**1080p/60fps**

Real-Time Image Quality

**900MHz/2.4GHz/5.2GHz/5.8GHz\*\***

Frequency Bands

**<150ms**

Latency

\*This feature will be available in a future update.

\*\*5.2GHz is only applicable for FCC, CE, and UKCA regions. 900MHz is only applicable for FCC regions.





# Mission Ready Payload

The payload integrates wide-angle, zoom and thermal camera with a laser rangefinder for all data capture needs and critical decision making.

**50MP**

Wide Camera

**48MP**

Zoom Camera

**8K 10x**

Optical Zoom

**160x**

Max. Hybrid Zoom

**640x512**

Thermal Resolution

## Laser Rangefinder

Tap a target to get the coordinates and altitude rapidly from up to 0.75 miles away.

## Wide Camera

Moonlight Algorithm 2.0 boosts post processing and allows the pilot to capture crisp, detailed images in low-light environments. Video: support 4K 30fps, max ISO 64000. Photo: Moonlight mode reduces noise and enhances HDR.



## Thermal Camera

Equipped with 640\*512 high-resolution thermal imaging camera, 30fps, and 16x digital zoom.

## Zoom Camera

Supports for 8K 10x optical zoom, and 160x Max. Hybrid Zoom with clear details on targets up to 1.24 miles away.

# Autel Enterprise App Platform

The Autel Enterprise App is built from the ground up for industrial applications and features a brand-new interface for simple, efficient operation. Additional features and semi-autonomous modes maximize the EVO Max 4T's mission capability.

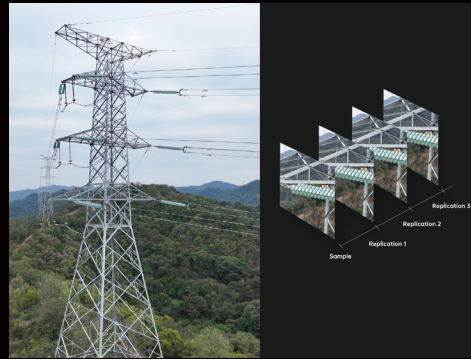


# Smart Features



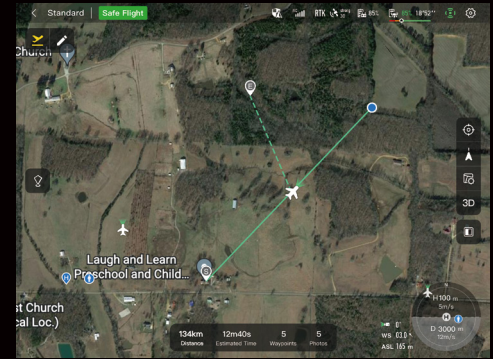
## 3D Map Planning

Plan, create, and execute 3D waypoint mission plan on a 3D map.



## Mission Reproduction\*

With this feature activated, fly a manual or semi-autonomous mission, or string multiple missions together. The EVO Max 4T will automatically record the camera angles and replicate the mission you just flew.



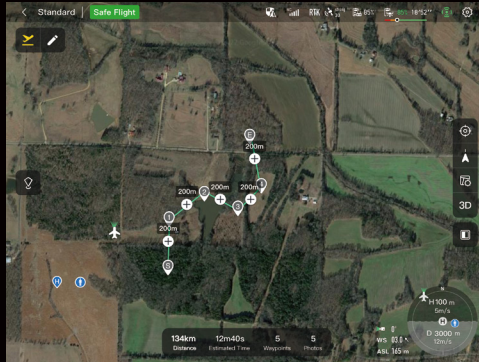
## Quick Mission\*

Temporary quick missions can be created while executing other missions, and multiple sub-missions can be stacked for enhanced flexibility.

\*This feature will be available in a future update.

# Multiple Mission Types

The Enterprise App provides various autonomous and semi autonomous mission planning for public safety, inspection, and surveying.



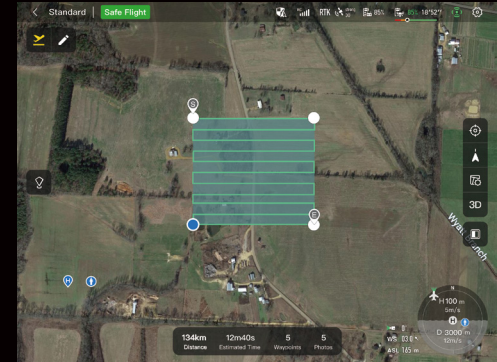
## Waypoint Missions

Users can add waypoints for flexible, non-structured flight paths.



## Rectangular Mission

Supports one-click automatic generation of a rectangular flight area.



## Automatic Mission Generation And Data Capture\*

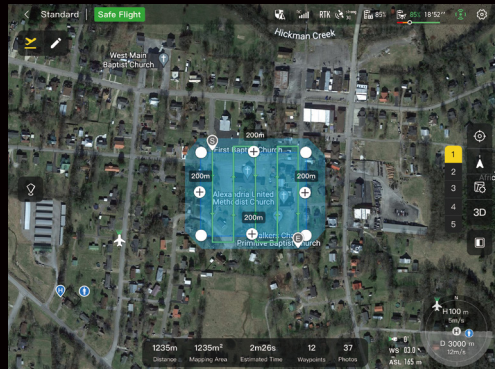
Automatically produce routes by adding regional boundary points through dots or importing KML files.

\*This feature will be available in a future update.



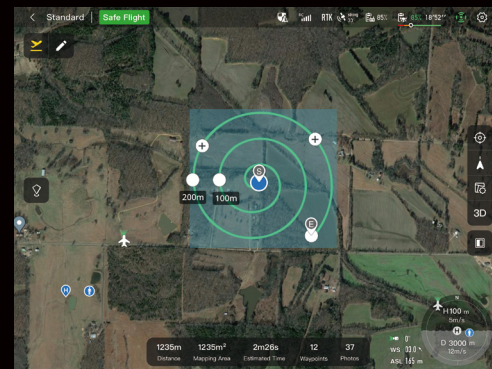
## Terrain Follow\*

Maintain relatively constant altitude from the ground for uneven or sloped terrain.



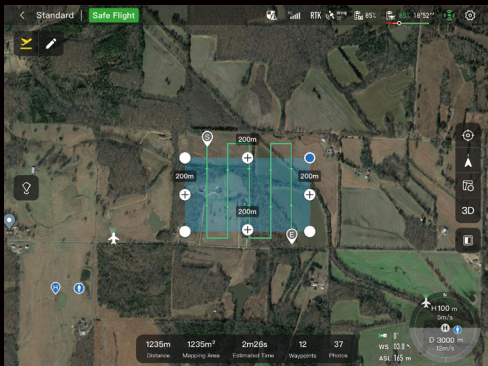
## Oblique Photography

Automatically plan 5 groups of routes (1 ortho + 4 oblique) according to the flight area set by the user.



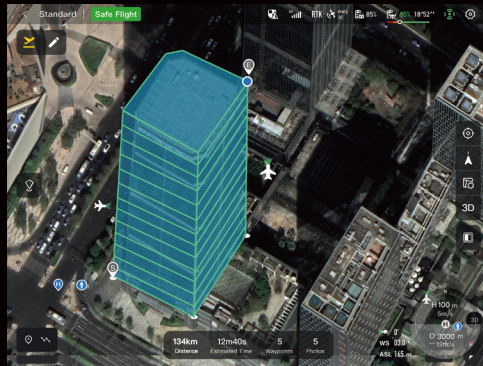
## Spiral Mission\*

Supports helical flight search in a designated area for SAR.



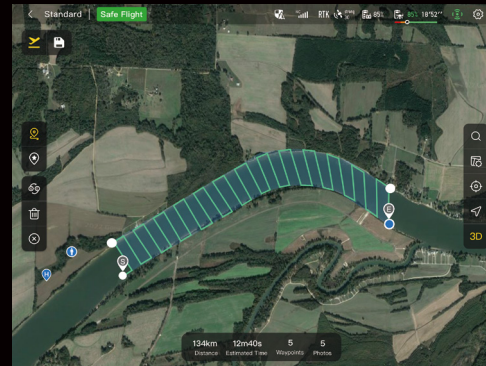
## Polygon Mission

Supports one-click automatic generation of polygon flight areas.



## Vertical Scan\*

Perform vertical surveys for building facades, open pit walls, and towers.

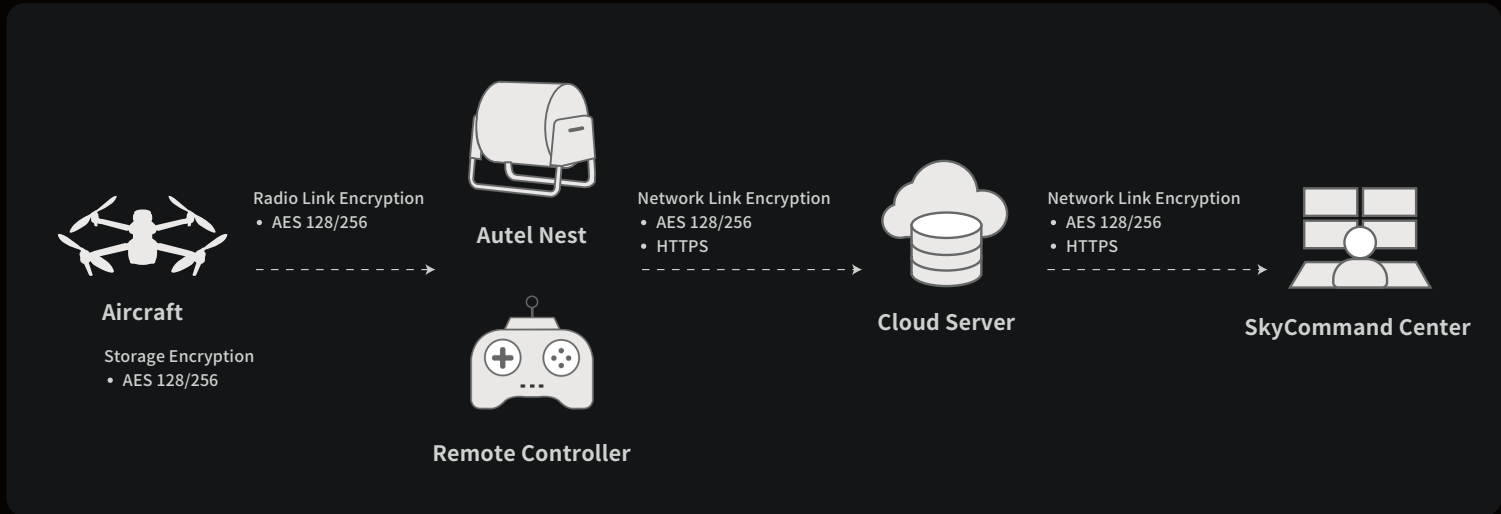


## Corridor Mission\*

Supports intuitive and effective corridor mission planning for roads, rivers, pipelines, power lines and other narrow, large-scale terrain.

\*This feature will be available in a future update.

# Data Security



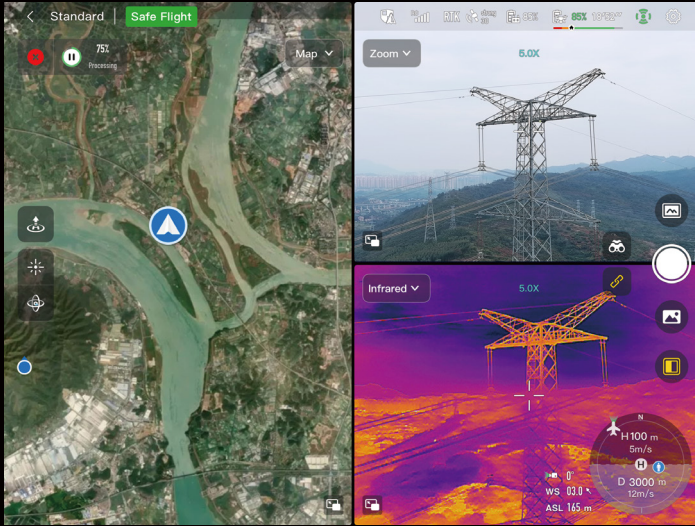
## Privacy Protection

Data involving user and aircraft information, including flight logs, locations, and account information can only be physically accessed via the aircraft locally.

## Encrypted Data Storage

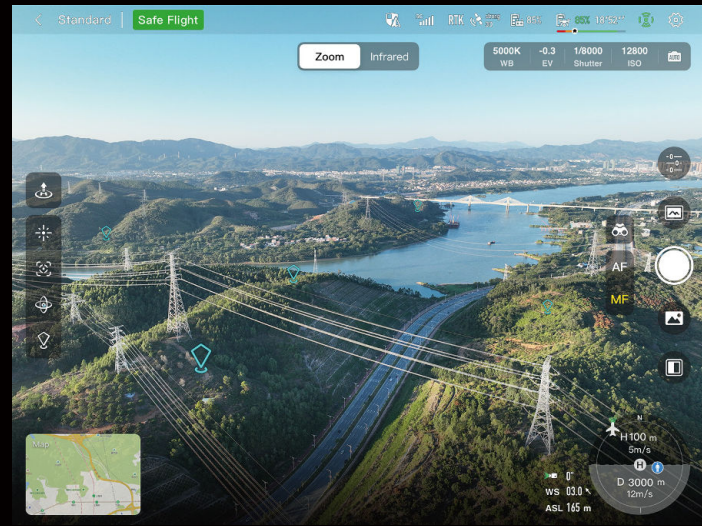
Supports AES-256 encryption for photos, videos, and flight logs, are password-protected.

# Enhanced Live-View



## Multi-channel Projection Screen\*

Supports simultaneous output of RGB, infrared, night vision, and wide-angle images.



## AR Scene\*

Geo-location data and other aircraft location info detected by ADS-B can overlay on real-time map, which is convenient for users to confirm the drone's location and avoid airborne risks.

\*This feature will be available in a future update.



# Autel SDK

The Autel SDK is open to the world, helping developers and partners reduce software and hardware development costs and jointly create a new industry ecosystem.



## Mobile SDK

Open UX SDK (iOS&Android) can directly call up the ready-made interactive interface.



## Payload SDK\*

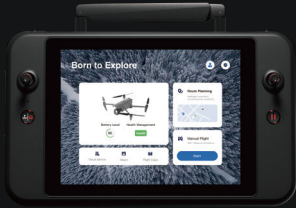
Unified interface standards support access to third-party mounts such as microphones and gas detectors.



## Cloud SDK\*

Enables remote live broadcast and control of drones and Nests through third-party platforms or web pages.

# Accessories



## Autel Smart Controller V3

**Daylight Readable Display:** 7.9 inches, 2000nits maximum brightness, 2048\*1536 resolution.  
**SuperDownload:** Download footage from drone to mobile device at a maximum rate of 20MB/s.  
**Functional Interface:** HDMI ports allow connection to 3rd party displays or monitors.  
**Ultra-Long Battery Life:** Up to 4.5 hours of continuous operation. 2-hr fast charging from empty.  
**Local Storage:** Built-in 128G storage space allows 3rd party apps and mission media storage.



## Live Deck 2 (optional)

Broadcast live mission intel to other personnel in the operation for enhanced situational awareness and critical decision making without the need for LTE connection. The EVO Max 4T is compatible with Live Deck 2, which offers multiport streaming to monitors and Wi-Fi support for multiple local smart phones.



## RTK Module (optional)

Provides centimeter-accurate positioning data for mapping and reduces electromagnetic interference for flying near critical structures.

# Application



# Specifications

Aircraft	
Weight	3.5 lbs (1600g, battery and gimbal included)
Max. Takeoff Weight	4.41 lbs (1999 g)
Dimensions	576*660*149 mm (fold, incl. propellers) 340*407*148 mm (fold, excl. propellers) 257*136*133 mm (unfold, excl. propellers)
Diagonal Wheelbase	1.52 ft (464mm)
Max Flight Time	42 mins
Operating Temperature	-4°F to 122°F (-20°C - 50°C)
Max Wind Resistance	27 mph (12m/s)
Hovering Accuracy	Vertical: ±0.1 m (Vision System enabled); ±0.3 m (GPS enabled); ±0.15 m (RTK enabled); Horizontal: ±0.15 m (Vision System enabled); ±0.3 m (GPS enabled)
IP Rating	IP43
GNSS	GPS+GLONASS+Galileo+Beidou

Image Transmission	
Operating Frequency	2.4G / 5.2G(FCC、 CE、 UKCA) / 5.8G / 900MHz(FCC)
Max Transmission Distance (unobstructed, free of interference)	12.4 miles/20km (FCC), 4.9 miles/8km (CE)
Transmitter Power (EIRP)	2.4GHz: <33dBm(FCC), <20dBm(CE/SRRC/MIC) 5.8GHz: <33dBm(FCC), <30dBm(SRRC), <14dBm(CE) 5.15-5.25GHz: < 23dBm(FCC/SRRC/MIC) 5.25-5.35GHz: <30dBm(FCC), <23dBm(SRRC/MIC)

Visual Sensing System	
Obstacle Sensing Range	Forward/Upward/Downward/Backward/Sideward: 0.2~50m
FOV	Forward/Backward/Sideward: 60°(H), 80°(V) Upward/Downward: 360°(H), 190°(V)

Aircraft Battery	
Capacity	8070 mAh
Voltage	14.88V
Battery Type	LiPo 4S
Energy	120 Wh
Net Weight	1.15 lbs (520g)
Charging Temperature	41° F to 113° F (5°C to 45°C) When the temperature is lower than 50° F (10° C), the selfheating function will be automatically enabled. Charging in a low temperature may shorten the lifetime of the battery.
Hot Swap	Support

Millimeter-wave Radar Sensing System	
Frequency	60Ghz~64Ghz*
Dimensions	1.5*0.55*0.08 in (L*W*H)
Weight	0.07oz (2g)
EIRP	18dBm
Sensing Range	Upward: 5.9~787.4in (0.15~20m) Downward: 3.9~4724.4in(0.1~120m) Forward and Backward (Standard/Comfortable): 0.82~98.43ft (0.25~30m) Forward and Backward (Ludicrous) : 1.64~196.85ft (0.5~60m)
FOV	Horizontal (6dB) : ±60°, Vertical (6dB) : ±30°
Speed Measurement Range	± 134mph (60m/s)
Speed Measurement Accuracy	≤1%
Max. Target Detection Number	32

### Zoom Camera

Sensor	1/2" CMOS, Effective pixels: 48M
Lens	Focal length: 11.8-43.3mm (35mm, equivalent: 64-234mm) Aperture: f/2.8-f/4.8
ISO Range	Auto: ISO100 ~ ISO6400 Manual: Photo: ISO100 ~ ISO12800 Video: ISO100 ~ ISO6400

### Wide Camera

Sensor	1/1.28" CMOS, Effective pixels: 50M
Lens	DFOV: 85° Focal length: 4.5 mm (equivalent: 23 mm) Aperture: f/1.9 AF motor: 8-wire SMA, PDAF focus
ISO Range	Auto: Photo: ISO100~ISO6400 Video: ISO100~ISO64000 (Night scene mode: up to ISO64000) Manual: Photo: ISO100~ISO12800 Video: ISO100~ISO6400

### Thermal Camera

Thermal Imager	Uncooled VOx Microbolometer
Lens	DFOV: 64° Aperture: 13mm Focus: f/1.2
Infrared Temperature Measurement Accuracy	26.6~37.4 °F or reading ±3% (using the larger value) @ambient temperature -4°F to 140°F
Video Resolution	640*512
Temperature Measurement Range	-4°F to 302°F, 32°F to 1022°F (-20°C to 150°C, 0 to 550°C)
Temperature Alert	High and low temperature alarm thresholds, reporting coordinates and temperature values

### Laser Rangefinder

Measurement Accuracy	±3.3ft (1m)
Measuring Range	3937ft (1200m)

## Autonomy

Non-GPS Hovering And Manual Flight	Indoor: Horizontal error $\leq 1.18$ in (At least have texture at one direction) Outdoor: Daytime: Within 1640ft (500m) flight height, horizontal error $< 0.01 * \text{height}$ Night: Manual flight is controllable within 328ft (100m) flight height
Non-GPS Return-to-Home	Within 1640ft (500m) flight height, horizontal error of Return-to-Home point $< 11.81$ in
Automatic Obstacle Rerouting	High Speed Obstacle Rerouting: Flight speed up to 45mph(20m/s) when Min. safety distance to obstacle is 4.9ft (1.5m) High Precision Obstacle Rerouting: Flight speed could reach 6.7mph(3m/s) when Min. safety distance to obstacle is 1.64ft (0.5m)
Multi-target Recognition And Tracking	Target identification types: people, vehicles, boats Number of targets detected: 64 Comprehensive recognition accuracy: $> 85\%$

\*Please fly safely and consult your local laws and regulations.



[www.autelrobotics.com](http://www.autelrobotics.com)