



How You Measure Matters

FRONTIER PRECISION TRAINING

SURVEY SESSIONS

TRIMBLE CERTIFIED TRAINING

1, 2, OR 3 DAY TRAINING OPPORTUNITY

March 11, 12, 13, 2019 | 9:00 AM - 5:00 PM / Each Day

FRONTIER PRECISION | SIOUX FALLS, SD



DAY 01 MONDAY, MARCH 11TH

Trimble GNSS Training

This session will be a hands-on training using Trimble R-Series GNSS equipment with Trimble Access.

03/11 | COURSE OBJECTIVES:

- GNSS/RTK & VRS Theory & Fundamentals
- Trimble Access Survey Styles & Job Properties for GNSS Operations
- Topographic Field Data Collection
- Site Calibration Tips & Tricks
- Stakeout Routines
- Coordinate Geometry (COGO) Computations

DAY 02 TUESDAY, MARCH 12TH

Trimble Robotic Total Station Training

This session will be a hands-on training using Trimble S-Series Robotic Total Stations & Trimble Access.

03/12 | COURSE OBJECTIVES:

- Robotic Total Station Maintenance & Collimation Routines
- Station Setup & Resection Procedures
- Topographic Field Data Collection
- Staking Points, Lines, & Alignments

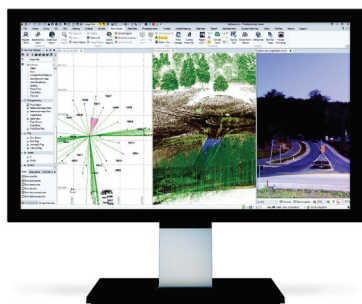
DAY 03 WEDNESDAY, MARCH 13TH

Trimble Business Center Training

This session will give participants a solid foundation of the Trimble Business Center field-to-finish workflows.

03/13 | COURSE OBJECTIVES:

- Configuring Project Settings & Creating Project Templates
- Importing GNSS, Total Station & Level Data of Various Types
- QA/QC & Editing Raw Data
- OPUS & Other Post Processing Workflows
- Creating & Processing Feature Codes
- Surface Creation & Editing
- Explore File Export Options
- Creating Custom Reports



SESSION DETAILS

COST

\$375 per day
 \$700 for two days
 \$1,050 for three days

LOCATION

Frontier Precision
 3720 South West Avenue
 Sioux Falls, SD 57105

TIME

9:00 AM - 5:00 PM / Each Day

DURATION

1, 2, or 3 Days

Class size limited to 12 students, per session.
 Classes fill up fast, so register today!
 Lunch is **NOT** included.

REGISTRATION CLOSING MARCH 6TH!



Or register on our website at:
WWW.FRONTIERPRECISION.COM

WANT MORE INFORMATION? CONTACT:

Dylan Jones, Applied Geospatial Engineer
 10900 73rd Avenue North, Maple Grove, MN 55369
 djones@frontierprecision.com
 763.496.1366 or 877.698.3077 [Toll Free]
www.frontierprecision.com



1988-2018
AN EMPLOYEE-OWNED COMPANY