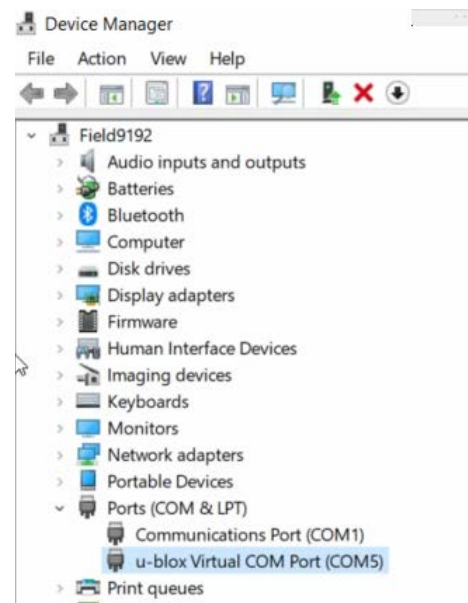


Reason

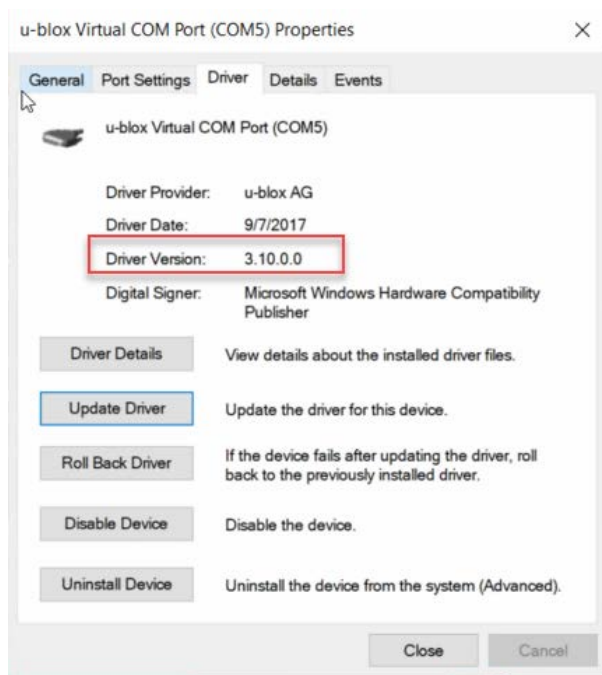
Windows 10 automatically updates if you are connected to the Internet. This may also update the internal GNSS (GPS) drivers, which may break the GPS connection for some software. See [Juniper System's article](#) for all the details.

Solution

Verify the version of the GNSS drivers that is installed. Go to the Device Manager and find the u-blox Virtual COM Port, then go to Properties.



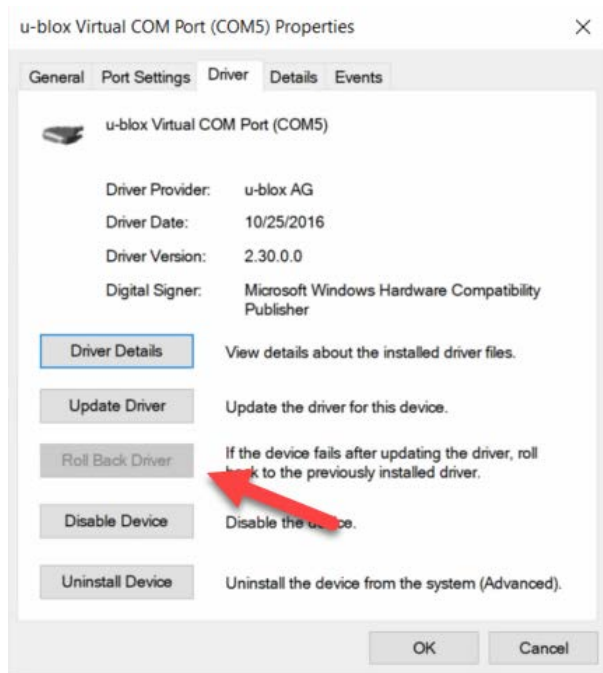
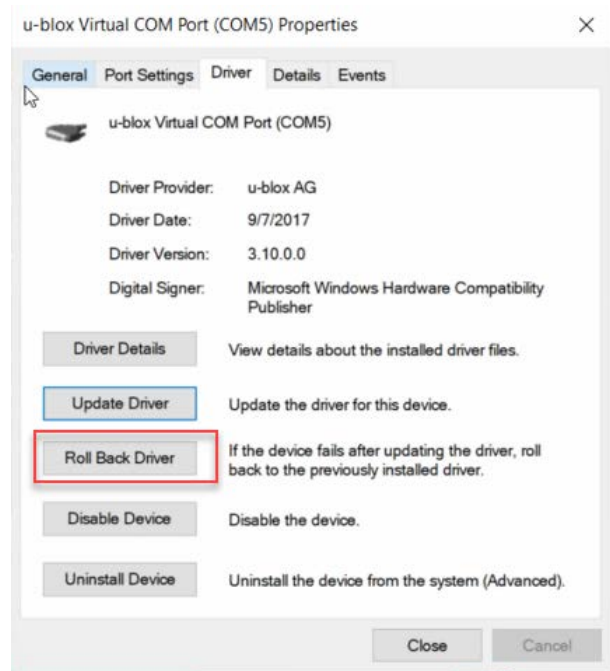
Go to the Driver tab and look at the Driver Version.



If the version is 2.30, no further action is required. If the version is 3.10, the driver will need to be rolled back to 2.30.

If the Roll Back Driver button is enabled, tap on it. Select a reason for the roll back on the next screen then press OK. When the operation completes, the act of rolling back will prevent the drivers from being updated automatically in the future.

If the Roll Back Driver button is disabled, you'll have to download and install the 2.30 drivers.



The v2.30 drivers can be downloaded from these links:

- [uBlox VCP \(Virtual COM Port\) Device Driver version 2.30](#)
- [uBlox Location Sensor Device Driver version 2.30](#)

Download and install both drivers.

2

154 1st Avenue West, Jerome, ID 83338
 Ph: 208-324-8006 <http://www.frontierprecision.com>