

# EVO II Series V3

## Built for Public Safety



## A Perfect Solution for Public Safety



### Lightweight & Compact

Transportable in a single case, it can ride in a patrol car until it's needed or be easily carried in the field.



### Reduces Officer Stress

The EVO II Series V3 can go from its case to the air in 45 seconds, keeping your focus on the situation.



### Limited Geofencing

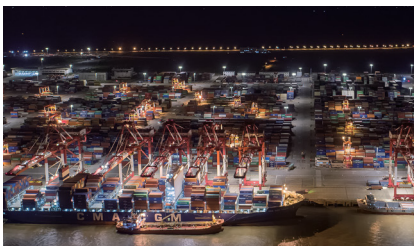
Enterprise pilots are able to take off and land at most locations, including no fly zones.



### Team-Oriented

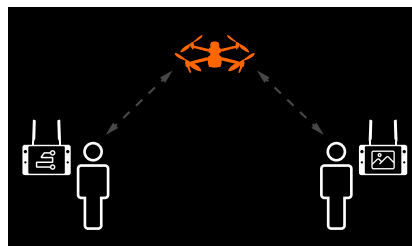
Keep other units "in-the-know" using streaming from Live Deck 2 with secure AES-128 data encryption.

## Take Your Work Further



### Unprecedented Visibility

V3's Moonlight Algorithm 2.0 boosts low light performance, minimizing the need for special equipment in many low light scenarios



### Dual Operator\*

Essential tasks can be split, with one person flying the drone, identifying risks and obstacles, while the other operator is dedicated to controlling the gimbal.



### Live Deck 2 Streaming

Broadcast live drone footage to commanders, ground team members, and anybody else who needs a drone's eye view.

*\*Feature will be available in a future firmware update.*

# Secure by design, not an order



## Privacy Protection

Information must be physically accessed via the aircraft and is protected by AES-128 encryption.



## No Forced Updates

EVO II Pro V3 does not need to be on the latest firmware or app version in order to take off.



## Anti-Jamming

Algorithms built in to counter RFI for peace of mind in flight.



## ADS-B In\*

Receives flight information on nearby aircraft to support airspace deconfliction.

*\*RTK and Enterprise models only.*

## Respond Accordingly

**20MP**

1" CMOS Sensor

**12-Bit**

DNG Photos



**640x512**

Thermal Resolution

**50MP**

1/1.28" RYYB CMOS Sensor, 4K HDR

**6K**

Ultra HD Video

**f/2.8-f/11**

Adjustable Aperture

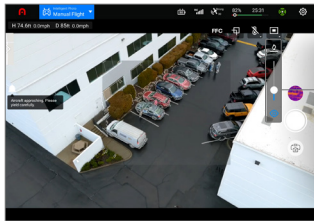
**4x/16x**

Lossless/Digital Zoom

**9.3 miles**

Transmission Range

## Advanced Capabilities



### Thermal Tuning

The thermal slider layers both camera feeds over each other, allowing opacity adjustments that let operators see through glass or search for people and other temperature variations, while still maintaining situational awareness.



### DRI Ranges

See a specific subject's identity, activity, or personal items.

- **Detection:** Detect if an object is present.
- **Recognition:** See what type of object it is.
- **Identification:** Determine subject affiliation and intent.

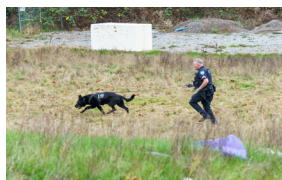
## Specifications

<b>Weight</b>	2.63 lbs (1191g, battery and gimbal included)
<b>Max Flight Time</b>	40 mins (EVO II Pro - no wind)
<b>Dimensions</b>	<b>Folded:</b> 9.1" x 5.1" x 4.3" <b>Unfolded:</b> 18" x 22" x 4.3"
<b>Flight Speed (Ludicrous)</b>	45 mph
<b>Max Wind Resistance</b>	27 mph (Level 6)

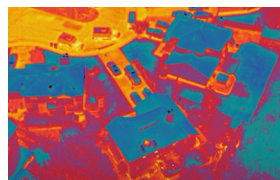
<b>Operating Frequency</b>	2.4GHz/5.2GHz/5.8GHz/900MHz
<b>Operating Temp Range</b>	14° F to 104° F
<b>Max Transmission Distance</b> (unobstructed, free of interference)	9.3 miles (15km)
<b>Obstacle Avoidance</b>	Omnidirectional Binocular Visual Sensing



**Pre-planning & Situational response**



**Subject monitoring & tracking**



**Reconnaissance & Intel Gathering**



**Disaster Response**



**Scene photography & reconstruction**

*\*Feature will be available in a future firmware update.*