

EVO II Series V3

Leader In Picture Quality and Flight Intelligence



All new chipset providing better imaging, enhanced range, Live Deck compatibility, and more.



9.3 mi Range

Expand the possibilities for your most critical workflows with a 9.3 mile transmission range.



360° Obstacle Avoidance

Equipped with 19 groups of sensors, including 12 visual sensors, the main camera, ultrasound, and IMUs.



Limited Geofencing

Pilots are able to take off and land at most locations, including some no fly zones.



Anti-Jamming

Algorithms built in to counter RFI for peace of mind in flight.



Pro 6K



EVO II Pro V3

- 6K Ultra HD Video
- 1" CMOS sensor
- 12 Bit DNG Photos
- 3x lossless and 16x digital zoom



EVO II Pro RTK V3

- Centimeter-accurate positioning
- NTRIP satellite connection
- 6K Ultra HD Video
- 1" CMOS sensor



EVO II Pro Enterprise V3

- 6K Ultra HD Video
- Carbon fiber arms and extra large propellers
- Modular add-ons



640T



EVO II Dual 640T V3

- 640x512 Thermal camera
- Not ITAR regulated
- Thermal Overlay Slider
- IPRC thermal analysis tools



EVO II Dual 640T RTK V3

- Centimeter-accurate positioning
- NTRIP satellite connection
- 640x512 Thermal camera
- 1/1.28" RYYB CMOS Sensor



EVO II Dual 640T Enterprise V3

- 640x512 Thermal camera
- Carbon fiber arms and extra large propellers
- Modular add-ons

Payload Details

20MP
1" CMOS Sensor

12-Bit
DNG Photos

6K
Ultra HD Video

f/2.8-f/11
Adjustable Aperture



640x512
Thermal Resolution

50MP
1/1.28" RYYB CMOS
Sensor, 4K HDR

4x/16x
Lossless/Digital Zoom

9.3 miles
Transmission Range

Accessories

The **EVO II V3 Series** is designed for ease of use and interoperability; these systems are new and improved to make flying, and sharing information as easy as possible.



LIVE DECK 2

- Real-time full HD streaming
- 7.46 mile range
- IP43 weather rating



Autel Smart Controller V3

- 7.9" HD Touch Screen
- 2,000nit super-bright screen
- IP43 weather rating



Autel Smart Controller SE

- 6.4" OLED Touch Screen
- 9.3 mile transmission range
- Quick-swap battery

Specifications (Based on EVO II Pro V3)

Weight	2.63 lbs (1191g, battery and gimbal included)
Max Flight Time	40 mins (EVO II Pro - no wind)
Dimensions	Folded: 9.1" x 5.1" x 4.3" Unfolded: 18" x 22" x 4.3"
Flight Speed (Ludicrous)	45 mph
Max Wind Resistance	27 mph (Level 6)

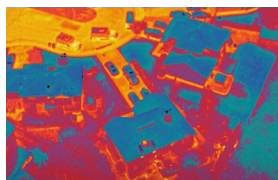
Operating Frequency	2.4GHz/5.2GHz/5.8GHz/900MHz
Operating Temp Range	14° F to 104° F
Max Transmission Distance (unobstructed, free of interference)	9.3 miles (15km)
Obstacle Avoidance	Omnidirectional Binocular Visual Sensing



Pre-planning & Situational response



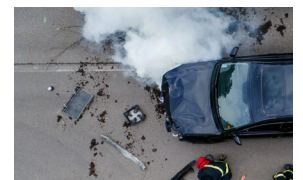
Subject monitoring & tracking



Reconnaissance & Intel Gathering



Disaster Response



Scene photography & reconstruction