

EVO Max 4T

A Leader of Drone Intelligence



A Perfect Solution for Public Safety



Lightweight & Compact

Easy to transport in a single case, into your patrol car, back of your pick-up, or in the field



Reduces Your Stress

15-sec deployment & Autonomy features make for easier flights & tracking which allows you situational focus



No Conditional Approval

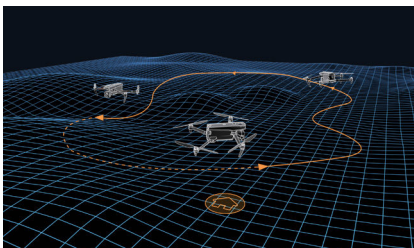
Fly missions in the day, night, & during complex condition like rain, dust, or snow



Team-Oriented

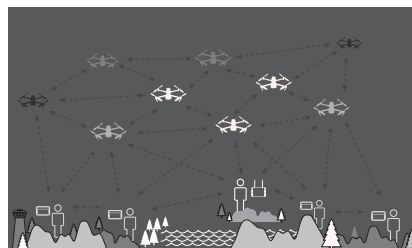
Kept other units 'in-the-know' using streaming from Live Deck 2 with secure AES-256 data encryption*

Take Your Work Further



Autonomous Path Finding

Autel's Autonomy Engine collects surrounding environmental data and plans 3D flight paths through complex environments.



A-Mesh 1.0

The all new A-Mesh system, enabling drone-to-drone autonomous communication, connection, and collaboration.



Autel SkyLink 3.0

The SkyLink 3.0 system comes with 6 antennas, 4 frequency bands, AES-256 encryption*, and optional 4G integration*.

*Feature will be available in a future firmware update.

Secure by design, not an order



Privacy Protection

User & aircraft information must be physically accessed via the aircraft locally



Encrypted Data

Supports AES-256 encryption* with password protection for data in transit or at rest



Anti-Spoofing & Jamming

Modules & algorithms built to counter RFI, EMI, & GPS spoofing for peace of mind in flight



ADS-B In

Receives flight information on nearby aircraft to support airspace deconfliction

Mission Ready Payload



50MP

Wide Camera

8K 10x

Optical Zoom

640x512

Thermal Resolution

48MP

Zoom Camera

160x

Max. Hybrid Zoom

0.75 mi

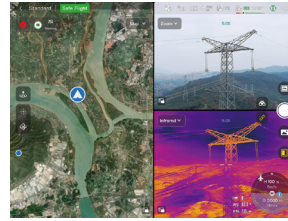
RangeFinder

Advanced Capabilities



Accurate Object Identification

EVO Max 4T can automatically lock on to different targets, including heat sources, moving people, or vehicles. This includes in high altitudes.



Multi-channel Projection Screen*

Get Multi-channel Projection Screen & AR Scene, supporting simultaneous output of RGB, infrared, night vision, and wide angle + ADS-B overlay on a real-time map

Specifications

Weight	3.3 lbs (1500g, battery and gimbal included)
Max Flight Time	42 mins
Dimensions	Folded: 10.1" x 5.4" x 5.2" Unfolded: 22.7" x 25.9" x 5.9"
Flight Speed	49 mph
Max Wind Resistance	27 mph (Level 6)

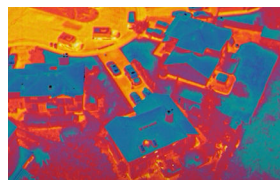
Operating Frequency	2.4GHz/5.2GHz/5.8GHz/900MHz
IP Rating	IP43
Max Transmission Distance (unobstructed, free of interference)	12.4 miles (20km)
Obstacle Sensing Range	Forward/Upward/Downward/ Backward/Sideward: 0.2~50m



Pre-planning & Situational response



Subject monitoring & tracking



Reconnaissance & Intel Gathering



Disaster Response



Scene photography & reconstruction

*Feature will be available in a future firmware update.