

CHASING M2 PRO MAX

Industrial-Grade Underwater ROV

Easy | Powerful

< New flagship products in the industry >



CHASING M2 PRO MAX provides user-friendly, professional and reliable underwater operation solutions for various industrial applications, such as underwater emergency rescue, hull and dock inspection, aquaculture inspection, water conservancy and hydro-power inspection, and scientific exploration and environmental protection inspection.

Easy

- Convenient to disassemble/assemble the accessories
- Easy to operate
- Portable and simple in storage

Powerful

- Attach 5 accessories at a time
- Meet the needs of different application scenarios
- Enable 24/7 missions without failure

Five Integrated Ports Simplifies the Installation of Multiple Accessories

The docking station is built into the control cabin, simplifying the installation of multiple accessories. The new layout of the five reserved ports supports up to five accessories at a time.

Easy and Convenient Assembly and Disassembly

The quick accessory assembly and disassembly technology allows you to install accessories on the ROV by combining the slide-in mounting platform and the ROV support rod, which is convenient, reducing the time and effort spent on assembly and disassembly.

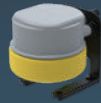
More Than 20 Innovative Chasing Accessories and Third-party Hardware Can Be Installed for Extensions.



LASER Scaler



Auxiliary Camera



DISTANCE LOCK SONAR



Imaging SONAR



WaterLinked DVL



Adapter Box



WSRC



USBL



Grabber Arm 2



Control Console



CHASING Water Sampler (500ml)



Multiparameter Sonde



C-SPSS

ROV	
SIZE	608x294x196mm (Excluding the floodlight)
WEIGHT	≈8kg
MAXIMUM DEPTH	200m
PULL (FORWARD/DRIFT UPWARDS/TRVERSE)	5.7/4.0/3.6kg
MAXIMUM BATTERY LIFE	>4h
BATTERY	302.4Wh
OPERATING TEMPERATURE	-10°C~45°C

Camera	
CMOS	1/2.3 inch
APERTURE	f/2.8
FOCAL LENGTH	0.3m~∞
ISO RANGE	100-6400
FIELD OF VIEW	150°
MAXIMUM IMAGE RESOLUTION	12M
IMAGE FILE TYPES	JPEG/DNG UHD:3840*2160 (4K) 30fps
NORMAL VIDEO	FHD:1920*1080 (1080p) 30/60/120fps
SLOW MOTION VIDEO	720p:8x (240fps) / 1080p:4x (120fps)
TIME-LAPSE VIDEO	4K/1080p
VIDEO MAXIMUM STREAM	60M
VIDEO TYPE	MP4
MICRO SD CARD MEMORY	128G

Sensor	
IMU	Three-axis gyroscope acceleration / compass
DEPTH SENSOR	< ±0.25m
TEMPERATURE SENSOR	< ±2°C

LED Lights	
BRIGHTNESS	2 x 4000lm
COLOR TEMPERATURE	5000K~5500K
CRI	85
DIMMING	Three adjustable

E-Reel	
SIZE	296x189x279 mm
WEIGHT	3.5kg
MAX STORAGE LENGTH	200 meters
BATTERY CAPACITY	4800mAh
NUMBER OF CYCLES	>300 times
RUNTIME	30 times
WIPING SPEED	3 gears
TAKE-UP SPEED (200M)	Fast Speed 220s; Low speed 9min
OPERATING TEMPERATURE	-10°C~45°C
CHARGING TIME	2H (12V) /4H (25.2V)

Remote Controller	
SIZE	160x155x125mm
WEIGHT	685g
BATTERY CAPACITY	2500mAh
BATTERY LIFE	≥6H (Depends on working condition)
WI-FI	Wi-Fi support
HDMI	Support
USB	Support
PHONE/TABLET CLIP	Maximum support 10 inches

Adapter	
ADAPTER	8A /25.2V
ROV CHARGING TIME	2.5H
REMOTE CONTROLLER CHARGING TIME	2H

Main Components

CHASING M2 PRO MAX

LED Lights

Five Ports Integrated

Camera

Thruster/ Propeller

Buckle Bracket

Battery Cabin

Hanging Ring

ROV

E-Reel

Remote Controller