



## FEATURED PAYLOADS

Fully Integrated Sensors for Inspection, Mapping, and LiDAR Applications



### WORKSWELL WIRIS ENTERPRISE

Radiometric 640x512 LWIR sensor  
30x optical zoom Full HD sensor  
High-resolution 16mpx fixed RGB sensor  
Laser rangefinder



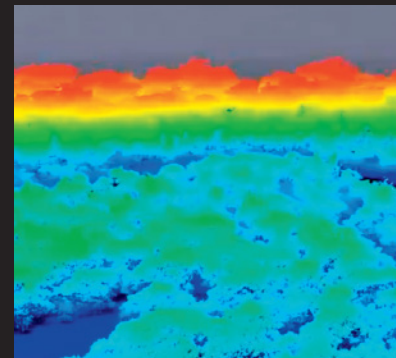
### PHASE ONE P3

50-100mpx high-accuracy imagery  
Laser rangefinder for auto-focus  
Fully integrated gimbal



### SONY A7R

61mpx 35mm full-frame sensor  
Interchangeable lens options  
Ideal for mapping or inspection



### LiDAR

Integrates with all LiDAR payloads <9KG

## Performance

Max Ascent Speed	5 m/s	16.4 ft/s
Max Descent Speed	2.5 m/s	8.2 ft/s
Max Air Speed	25 m/s	56 mph
Max Wind Resistance	12 m/s, 15 m/s gusts	23 knot, 29 knot gusts
Max Tilt Angle	30°	
Max Angular Velocity	Tilt: 300°/s, Yaw: 45°/s	
Operating Temperature	-10°C ~ 40°C	14°F ~ 104°F
Operating Humidity	10%~95%	
Service Ceiling (with given payload)	3.9 km (12,800 ft) w/ 4 kg, 2.2 km (7,200 ft) w/ 8.7 kg	

## Physical Features

Diagonal Size (propeller center to center)	1,025 mm	40.4 inches
Unfolded Size (flight ready, WxLxH)	165.5 x 154 x 76.5 cm	65.1 x 60.6 x 30.2 inches
Folded Size (stow, WxLxH)	47.5 x 49.5 x 47 cm	18.7 x 19.5 x 18.5 inches
Empty Weight (w/o batteries)	7.8 kg	17.2 lbs
Weight w/ Batteries	16.3 kg	35.9 lbs
Max Gross Takeoff Weight	25.0 kg	55.0 lbs
Max Payload Capacity	8.7 kg	19.1 lbs
Transport Case Size (WxLxH)	64.8 x 64.8 x 58.4 cm	25.5 x 25.5 x 23.0 inches
Transport Case Weight (w/ aircraft)	29.0 kg	64 lbs

## Flight Stack

Flight Controller	CubePilot Cube Blue H7 Triple Redundant IMUs
GNSS / Compass	CubePilot Here3 M8P (2x)
Payload Power Rails	5v, 12v/15v, 18v, 44.4v (12s battery voltage)
Payload Interface	IFT Universal Payload Interface V2.1
Operating Software	Copter by Ardupilot

## Flight Modes

Position Hold	Holds altitude and position, manual roll and pitch
Loiter	Holds altitude and position, precision manual movements using GPS
Auto	Executes pre-defined mission
RTL	Auto returns to takeoff location and lands
Land	Auto land while maintaining position
Altitude Hold	Holds altitude only, failsafe mode if GPS signal lost

**1200A Flight Time @ Given Payload Weight**

