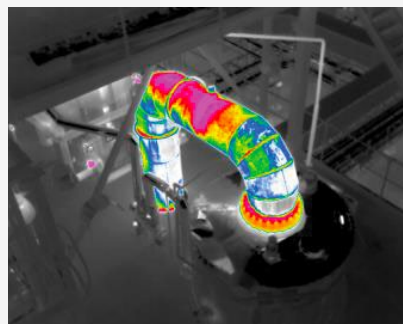
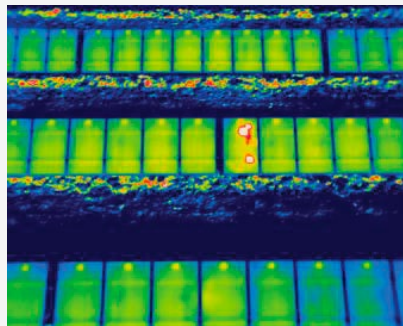




WIRIS ENTERPRISE

Most advanced drone thermal camera.

- 1266PX Thermal Resolution
- 16MPX RGB Camera Resolution
- 30X Optical Zoom
- 1500M Rangefinder
- 00.3°C Sensitivity
- 1500°C Temperature Range



WIRIS Enterprise Technical Specification

WIRIS Enterprise Key Features Description	
Super Resolution Mode	WIRIS Enterprise takes Super Resolution Mode 1.3Mpx IR images in one shot
Operating Onboard System	WIRIS OS for full real-time data streaming and control during the flight operating system ensures the full access to all camera functions easy camera control via S.Bus, CAN bus, MavLink, RJ-45 or Trigger trigger input for image recording, alarm output for confirmation
Laser Rangefinder	Distance measurement 10 to 1500 m (32 to 4920 ft), divergence: 1.4 x 0.4 mrad, EN 60825-1:2015-07 eye-safe 905nm
30x Optical Antivibration Zoom	Full HD 30x optical zoom camera with anti-vibration compensation and night vision mode
Thermal Camera Specification	
IR Camera Resolution	640 x 512 pixels
IR Super Resolution Mode	1 266 x 1 010 pixels (improvement of native resolution up to 1.3 Mpx)
FPA Active Sensor Size	1.088 x 0.8705 cm
Temperature Ranges	-25 °C to +150 °C (-13 °F to +302 °F) -40 °C to +550 °C (-40 °F to +1 022 °F) optional 50 °C to 1 000 °C (122 °F to 1 832 °F) optional 400 °C to 1 500 °C (752 °F to 2 732 °F)
Temperature Sensitivity	Standard 0.05 °C (50 mK, 0.09 °F) or optional 0.03 °C (30 mK, 0.054 °F)
Accuracy	±2 % or ±2 °C (±3.6 °F) in temperature range 0 °C to +150 °C (32 °F to +302 °F), after camera stabilization climate chamber and black body testing for all products
Frame Rate	30 Hz or < 9 Hz
Spectral Range / Detector	7.5 – 13.5 µm / Uncooled VOx microbolometer
Calibration of Each Lens	Package includes a calibration certificate
Available Lenses	18°, 32°, 45°, 69° (exchangeable lenses, all calibrated), visit FOV calculator
Protective Filter on Lens	Filter protects the lens against external damage during the flight
Thermal Image Digital Zoom	1 – 12x steps
Digital RGB Cameras – WIRIS Enterprise is Equipped with Two RGB Cameras	
Fixed Visual Camera	16Mpx resolution
High Resolution Fixed Camera	Resolution: 4 656 x 3 496 pixels (16 Mpx), 1/2.8" IMX298 sensor Field of view: extra wide DFOV 73.2°, focal 4.35mm Settings: configuration and stream in advanced auxiliary menu
30x Optical Zoom Camera	Resolution: 1 920 x 1 080 pixels (Full HD), 1/2.8" EXMOR R CMOS sensor Field of view: 30x optical zoom with vibration compensation and image stabilization, ultra-zoom HFOV 2.3° – extra wide 63.7°, focal 129.0 mm – 4.3 mm
Optical Zoom Camera Image Enhancement	Auto-white balance, WDR, IR cut filtering, DEFOG, 3D noise reduction
Optical Focus Camera – Autofocus	Autofocus with Direct Focus Zoom synchronization
Memory and Data Recording	
Memory	Internal high-speed SSD 128GB or 256GB for image and video recording External slot for Micro SD card & USB 2.0 for USB stick for taking images
Image and Video Formats	16Mpx high resolution camera JPEG images Optical zoom camera Full HD JPEG images Radiometric IR JPEG and IR TIFF images Pix4D and Agisoft compatible for 3D modeling Digital camera h.264 encode video HD recording Radiometric full-frame IR recording (raw data recording 30 Hz or < 9 Hz)
Software & SDK	
Desktop Software	Advanced software ThermoLab for radiometric calibrated analysis
SDK Libraries	Stream SDK, Data SDK, CANbus & UART SDK (on request)
Power Supply, Weight & Dimensions	
Input Supply Voltage	9 – 36 VDC, 2-pin HARTING connector
Power Dissipation	18W average (21W peak) consumption
Weight	< 680 grams (1.49 lb) including Rangefinder, without IP protection cap
Dimensions (L x W x H)	76 mm x 107 mm x 102 mm (2.99 in x 4.21 in x 4.01 in)
Mounting	2 x 1/4-20 UNC thread (1x bottom side, 1x upper side)
Housing Material	Durable aluminium body for long-time measurement stability