

SENSORS & SOFTWARE®
from RADIODETECTION

Rapidly locate metallic and non-metallic utilities.



LMX200™ GPR complements traditional pipe and cable locators and allows you to locate and map targets below the surface.

- Metal utilities, including pipes and cables
- Non-metallic pipes, including PVC and asbestos cement
- Concrete storm and sewer systems
- Utilities where installed tracer wiring has failed
- Underground storage tanks and drainage tiles
- Septic system components
- Non-utility structures such as vaults, foundation walls and concrete pads

LMX200™
Features unlocked with external GPS.

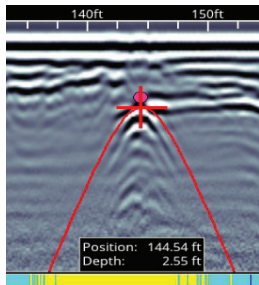
- High Visibility Touch Screen Display Unit**
 - Free lifetime system software updates
 - User selectable languages
 - US Standard and Metric units
- On-site Reports**
 - Produce instant on-site reports from your display unit
- USB**
 - USB for easy data transfer
- Integrated GPS**
 - Integrated GPS receiver for geo-referencing data
- Wi-Fi**
 - Built-in Wi-Fi capability
- GPR Sensor**
 - Patented ultra-wideband (UWB) 250 MHz GPR antenna
 - DynaT™ for Dynamic Target enhancement
 - Offers perfect balance of depth penetration (up to 8 m/26 ft) & high resolution
- Lightweight Fiberglass Cart Frame**
 - No metal parts that would interfere with GPR signals
 - Rugged, all-terrain cart with integrated odometer, easily maneuverable over any surface
- Optional External GPS**
 - For high accuracy positioning and mapping
- Lead Acid Gel Cell Battery**
 - Long lasting
 - Swappable
 - Locally available

LMX200™ Features

Enhance Your Productivity

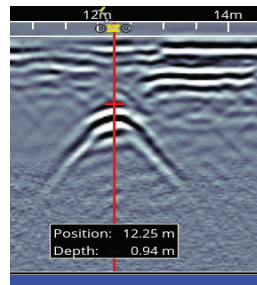
No complex settings – Just press Start and push the cart.

Easy Depth Calibration

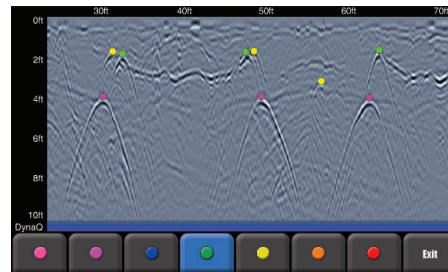


Use hyperbola-fitting to ensure accurate depth measurements and backup over the target to display its location and depth.

Pinpoint Depth & Location



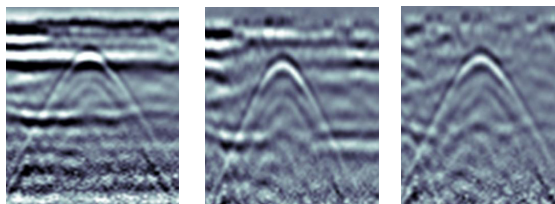
Color-Coded Field Interpretations



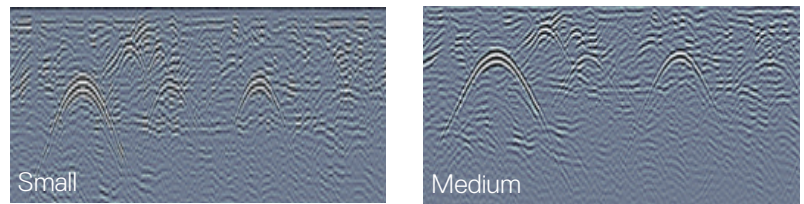
Classify your targets in real-time by selecting a color option and touching the screen.

Increase your target confidence in the field with image optimization.

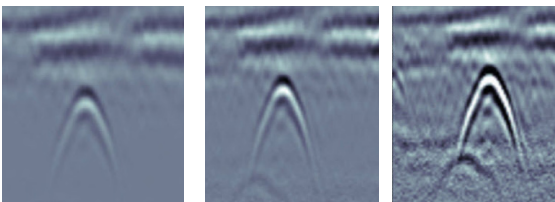
Preset Filters



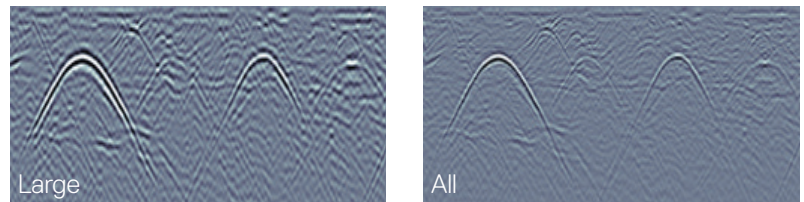
Dynamic Target Enhancement (DynaT™)



Adjustable Gain

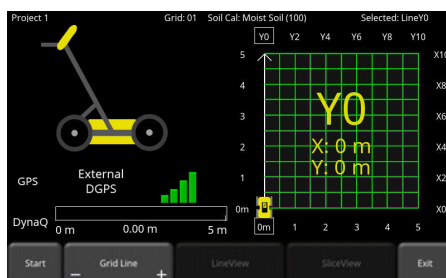


Optimize visibility of your targets with preset filters & gain.



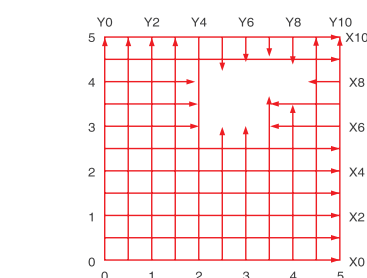
Enhance small, medium & large targets.

Grids & Depth Slices



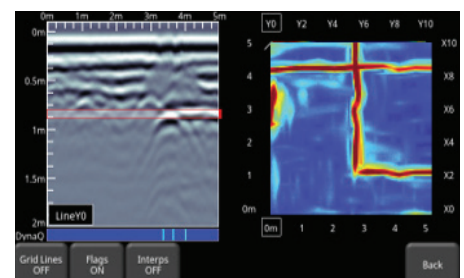
Flexible & Guided Grid Collection

The LMX200™ guides you through setup with pre-selected grid sizes. Stop lines early, or skip lines.



Obstacle Avoidance

System guides data collection around an obstacle in your grid.



In-field Depth Slices

Process grid data into depth slices and move down through your data to visualize targets at different depths. Depth Slice through multiple grids on-site.