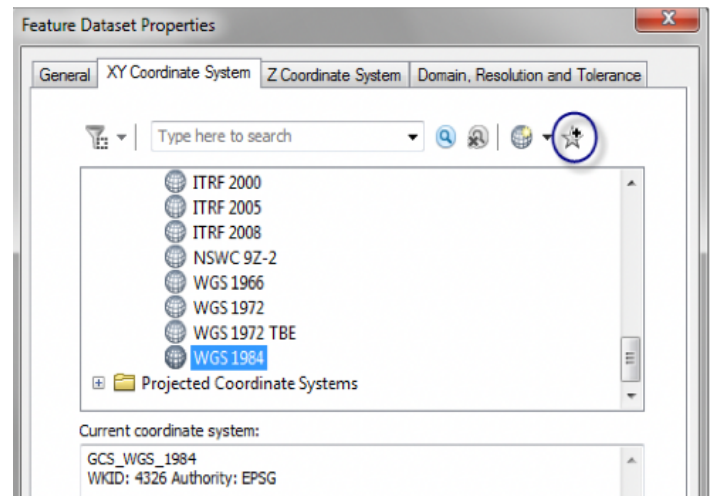


A projection file (.prj) is a text file containing information about the coordinate system and map projection. If you don't have a .prj file in your exported data you will get an error that there is no .prj file found or that your file is missing spatial reference.

Previously in ArcGIS 10.0, the .prj files were stored in the program files of you computer. With the updates in ArcGIS 10.1 and later, those .prj files are no longer available there. There are a few different options available in locating a .prj file to use and they are as follows.

- The .prj files can be downloaded from the [Spatial Reference website](#) and saved to your desktop computer. We recommend creating a Coordinate system folder on your computer's C drive and saving the .prj files there for easy access.
- All of the .prj files can be located on our support website and can be downloaded from there. We recommend saving the coordinate system folder on your computer's C for easy access. It will download as a zip file so you will need to extract the files before they can be used in Pathfinder® Office.
- In ArcCatalog™, go to a shapefile or a dataset and right click then select Properties. On the Properties menu, go to the XY Coordinate Systems tab. Now you are going to browse to the coordinate system that you need and add it to your favorites. You can add it to your favorites by right clicking and selecting Add to Favorites or by selecting the coordinate system you want and selecting the star with the plus sign. When you add a coordinate system to your favorites, it will create a .prj file for you that is stored on your computer as follows:



Windows 7-C:\Users\\AppData\Roaming\ESRI\Desktop10.1\ArcMap\CoordinateSystems Windows XP-C:\Documents and Settings\\Application Data\ESRI\Desktop10 \ArcMap\CoordinateSystems

- If you happen to have Trimble Positions Desktop add-in, you can click the icon to bring up the Trimble Positions Desktop Administrator. Click on Projects> Create...> Create Projection File (.prj) from Coordinate System (for Pathfinder Office). Type in a name for your .prj file and click Save

Once you have located the .prj files, you will select Utilities then Export in Pathfinder Office. After the Export dialogue box has opened, you will select the Properties button. Next, you will select the Coordinate Systems tab. You will select the Browse button next to the Projection Files. You will then browse to the .prj file that you have saved onto your computer from using one of the previous options. You will need to change the coordinate system to match the .prj file. You can do that by selecting the Use Export Coordinate System and click the Change... button. Click Ok to exit the Properties window. Click OK to start the export.

Note– If you need to use a different coordinate system later on, you will need to go back into the Properties on the Export Utility then change the coordinate system and .PRJ to match the new coordinate system.

