

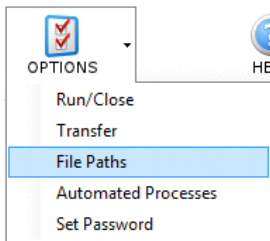
## Reason

DataLink GIS 4.0 supports synchronization with memory devices. This allows you to collect Sentinel data using a Windows tablet or laptop in the field, and move the memory device (e.g. SD card or USB drive) back and forth between the data collector and the PC running DataLink GIS. Data can also be synchronized wirelessly from the tablet; see the Support Note *Configuring Wireless Transfer for a Windows Tablet*.

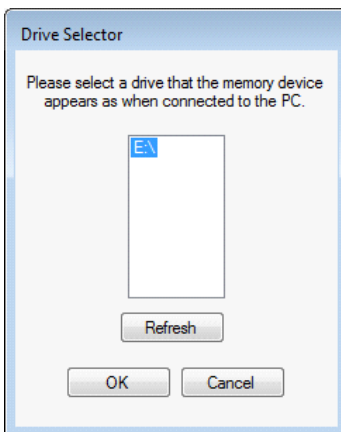
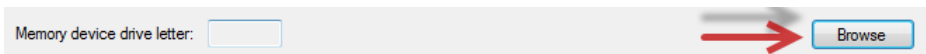
The Windows device will need GPS, a serial port (if using Adulticiding), and a memory device (SD card or USB drive recommended) to be used with Sentinel GIS.

## Solution

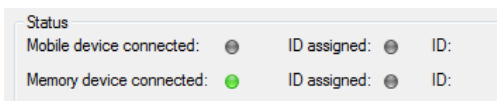
1. Install ArcPad on your Windows tablet. To do this, copy the ArcPad installer to a removable memory device and attach it to the tablet, then run the installer. Follow all instructions to install and authorize ArcPad.
2. On your main PC, start DataLink GIS then click Options > File Paths.



3. Set the Memory device drive letter. *Note: only drive letters that exist in Windows will be displayed. Plug in any card readers or external devices prior to this step.*



4. Insert a memory device into the configured drive letter. DataLink GIS will show that a memory device is connected.



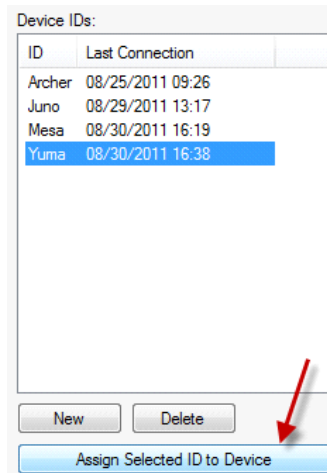
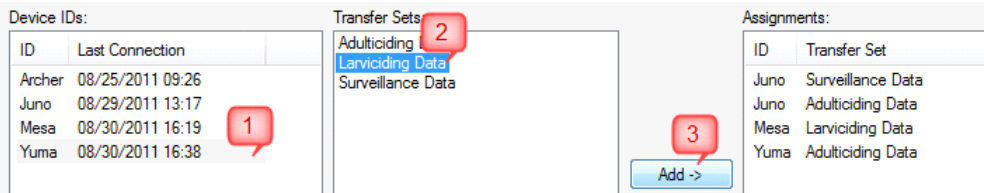
1

154 Ph: 208-324-8006 <http://www.frontierprecision.com>

5. Click Devices



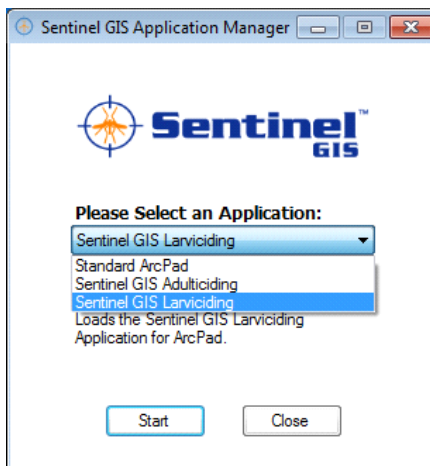
6. Create an ID, assign transfer sets to it, then assign it to the device. Click OK.



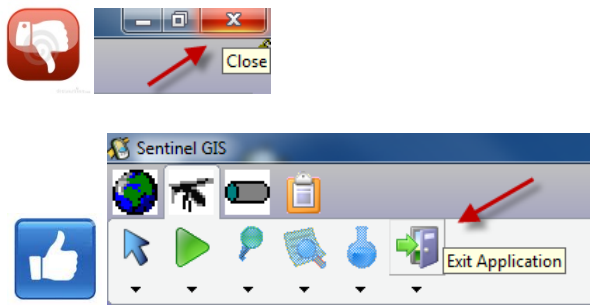
7. Click Send. Program files and data are transferred to the memory device.

8. Remove the memory device from your PC and insert it in the laptop or tablet.

On the laptop or tablet, browse to the memory device > DataLink GIS > Program Files > Elecdata. Double-click the **ElecData.Mobile.PC.ApplicationManager.exe** to run the Sentinel GIS Application Manager. This will add a shortcut to the desktop and Start menu if one does not already exist.



9. Select an application and press Start. Run Sentinel modules and collect data as you normally would, then Exit the application. Note: do not use the red "X" button to close the application on a Windows tablet or laptop while data collection is occurring, particularly with Sentinel Adulticiding, which is often in the process of recording spray records when the "X" button is clicked, resulting in shapefile corruption.



10. Remove the memory device from the tablet or laptop and reinsert it in the PC running DataLink GIS. **Be sure to exit Sentinel GIS on the Windows tablet or laptop first.**
11. Receive files and merge as you normally would using DataLink GIS, then send files back to the memory device.

**Note: Device settings for memory devices default to the following:**

**GPS: COM4, NMEA, 38400**

**AUX: COM1**

3

154 1<sup>st</sup> Avenue West, Jerome, ID 83338

Ph: 208-324-8006 <http://www.frontierprecision.com>

## *Common device settings:*

### **Juniper Mesa 2**

**GPS: COM4, 9600**

**AUX: COM5**

### **Mobile Demand T1550:**

**GPS: COM4, 9600**

**AUX: COM6**

## *To change these settings for all memory devices:*

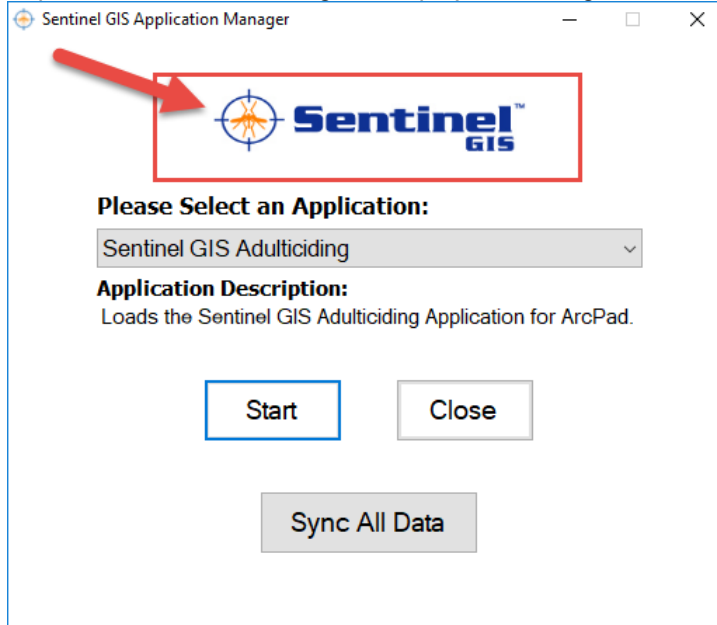
1. Navigate to the configured DataLink GIS Hand-Held Software path > Program Files > Elecdata.
2. Make a backup copy of ElecData.Mobile.ApplicationManager.config.
3. Open ElecData.Mobile.ApplicationManager.config in a text editor. Modify the following element as needed for the **Generic** device. The AuxPort is the port your sprayer cable connects to if you are using the Adulticiding module.

```
<DeviceType>  
<ID>17</ID>  
<Name>Generic</Name>  
<GPSProtocol>NMEA</GPSProtocol>  
<GPSPort>4</GPSPort>  
<GPSBaud>38400</GPSBaud>  
<AuxPort>1</AuxPort>  
<AuxBaud></AuxBaud>  
</DeviceType>
```

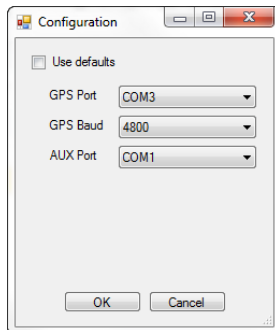
## *To change these settings on one device:*

1. Run Sentinel GIS.

2. Tap on the Sentinel GIS logo to display the Configuration window.



3. Uncheck the box to “Use Defaults” and set the GPS Port and AUX port (the serial port that the sprayer plugs into). Press OK. Settings will be saved on the device.



### Common device settings:

#### **Juniper Mesa 2**

**GPS: COM4**

**GPS Baud: 9600**

**AUX: COM5**

#### **Mobile Demand T1550:**

**GPS: COM4**

**GPS Baud: 9600**

5

154 1<sup>st</sup> Avenue West, Jerome, ID 83338

Ph: 208-324-8006 <http://www.frontierprecision.com>



## Using a Windows Data Collector

August 15, 2017

**AUX: COM6**

6

154 1<sup>st</sup> Avenue West, Jerome, ID 83338

Ph: 208-324-8006 <http://www.frontierprecision.com>

**Sentinel**<sup>®</sup>  
**GIS**

Copyright © 2017 by Frontier Precision, Inc. All rights reserved worldwide. All other trademarks are registered or recognized trademarks of their respective owners. Trademarks provided under license from Esri.