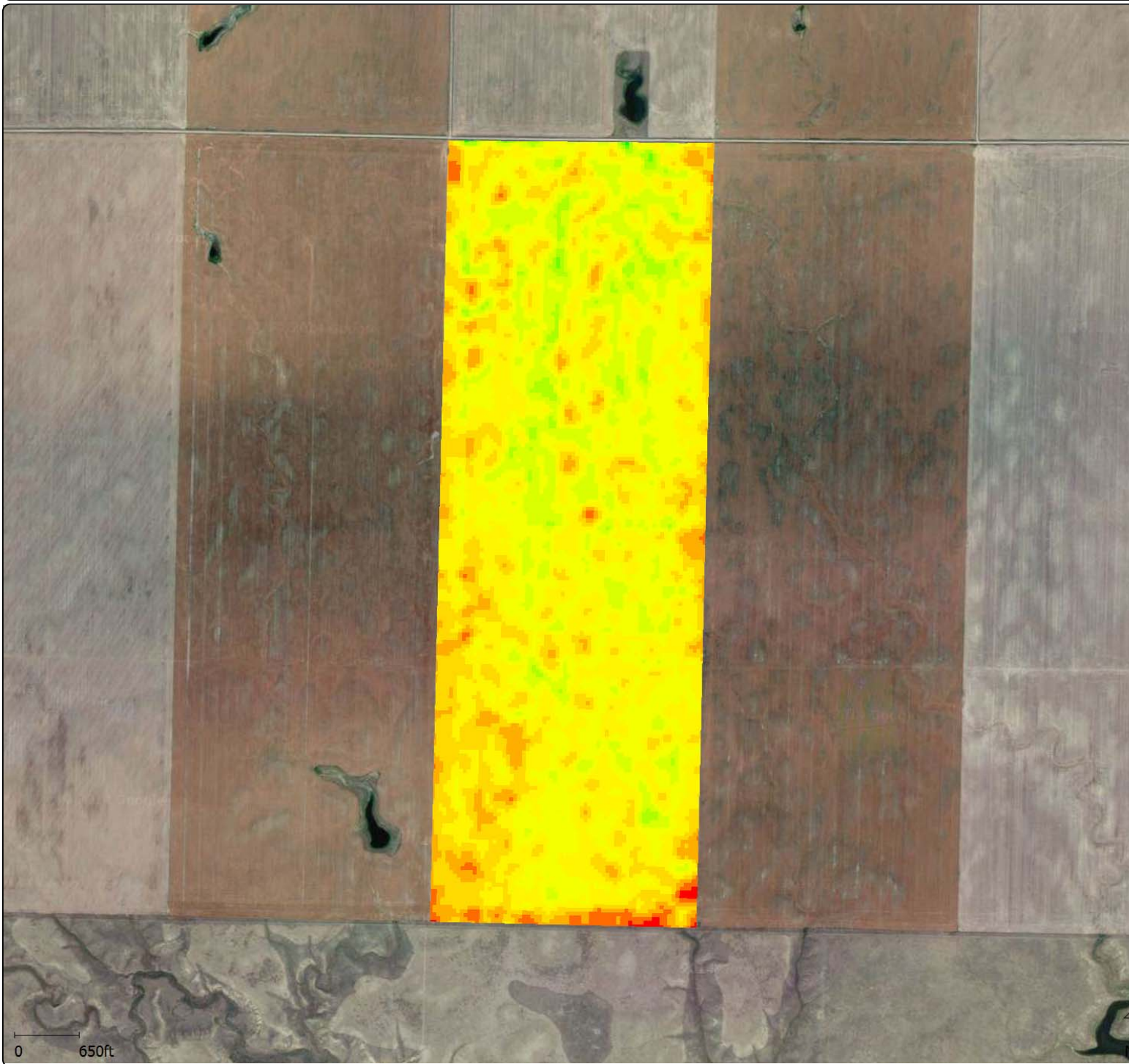
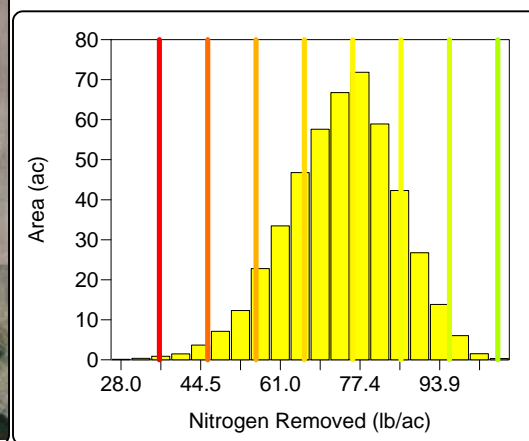
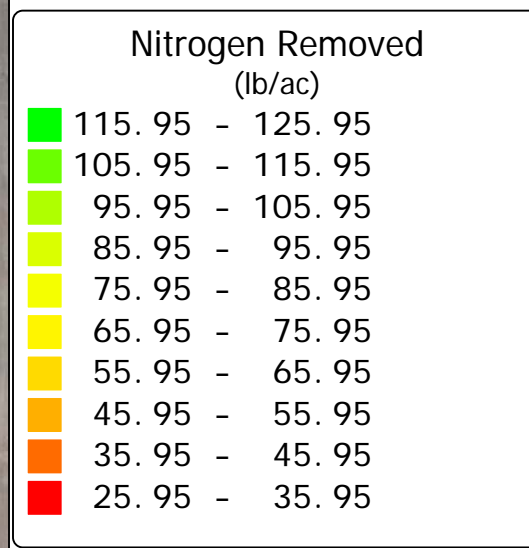


Nitrogen Removed 2015 - Carlin West



Nitrogen Removal
 Function Type: Equation Based Analysis
 Function Name: Nitrogen Removal
 Description: Create a nitrogen removal map based on yield and protein using 5.7 as the nitrogen concentration in grain. 39' grids (MSU Site-Specific Management Guidelines-24)
 Analysis Results
 Nitrogen Removed

Area : 475.05 ac



0 650ft