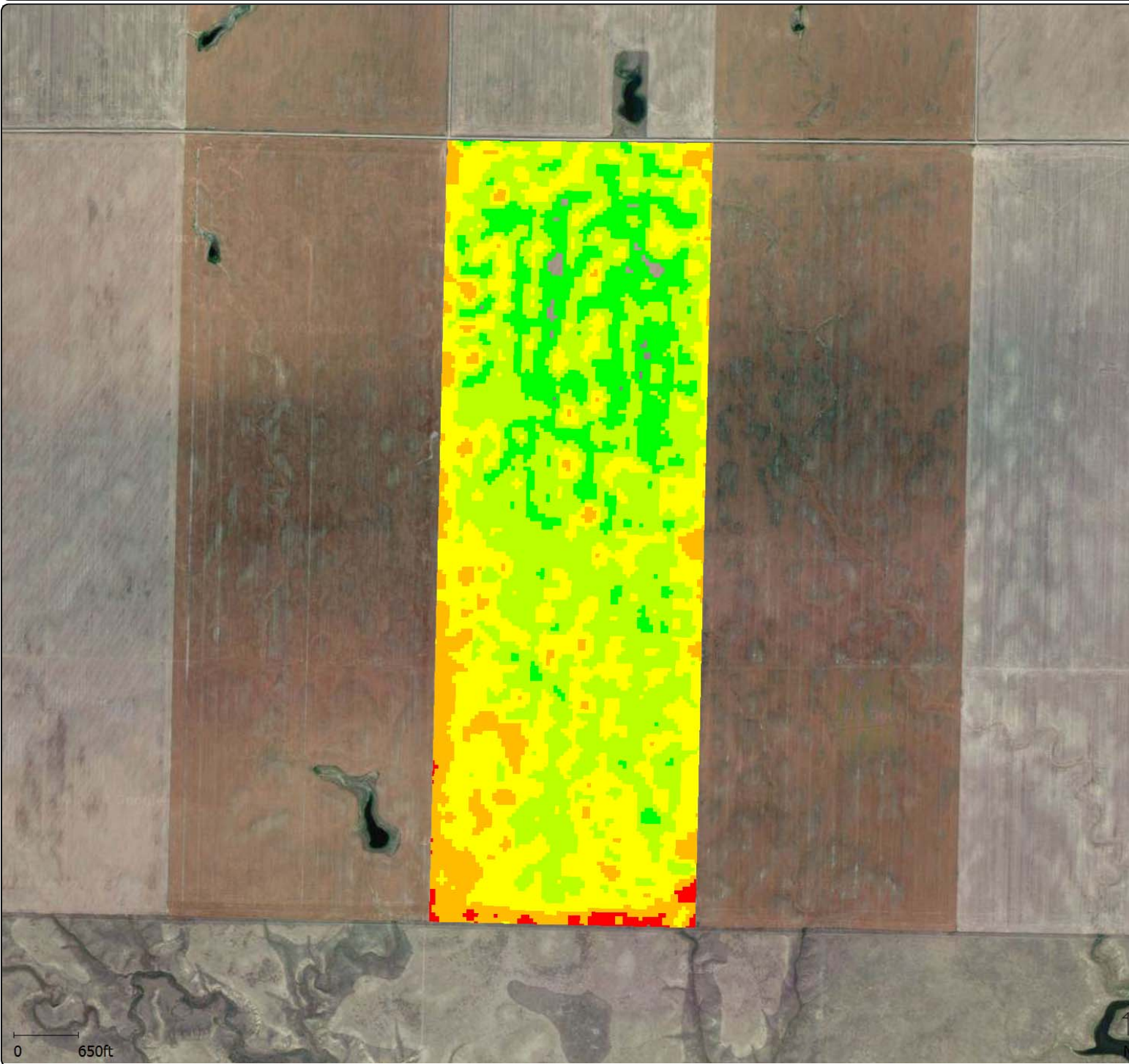


Profit/Loss 2015 - Carlin West



Profit/Loss Yield and Protein

Function Type: Equation Based Analysis
 Function Name: Profit/Loss Yield and Protein
 Description: Use a range of protein prices and apply to a gridded protein map to calculate the value (\$/bu) of the yield in that grid. Multiply by yield and subtract average field cost.






Analysis Results
 Profit/Loss

Area : 475.05 ac

Average Profit/Loss : 82.95 \$/ac

Total Profit/Loss : \$ 39404.96

Profit/Loss (\$/ac)

	127.40 - 177.40
	77.40 - 127.40
	27.40 - 77.40
	-22.60 - 27.40
	-72.60 - -22.60

