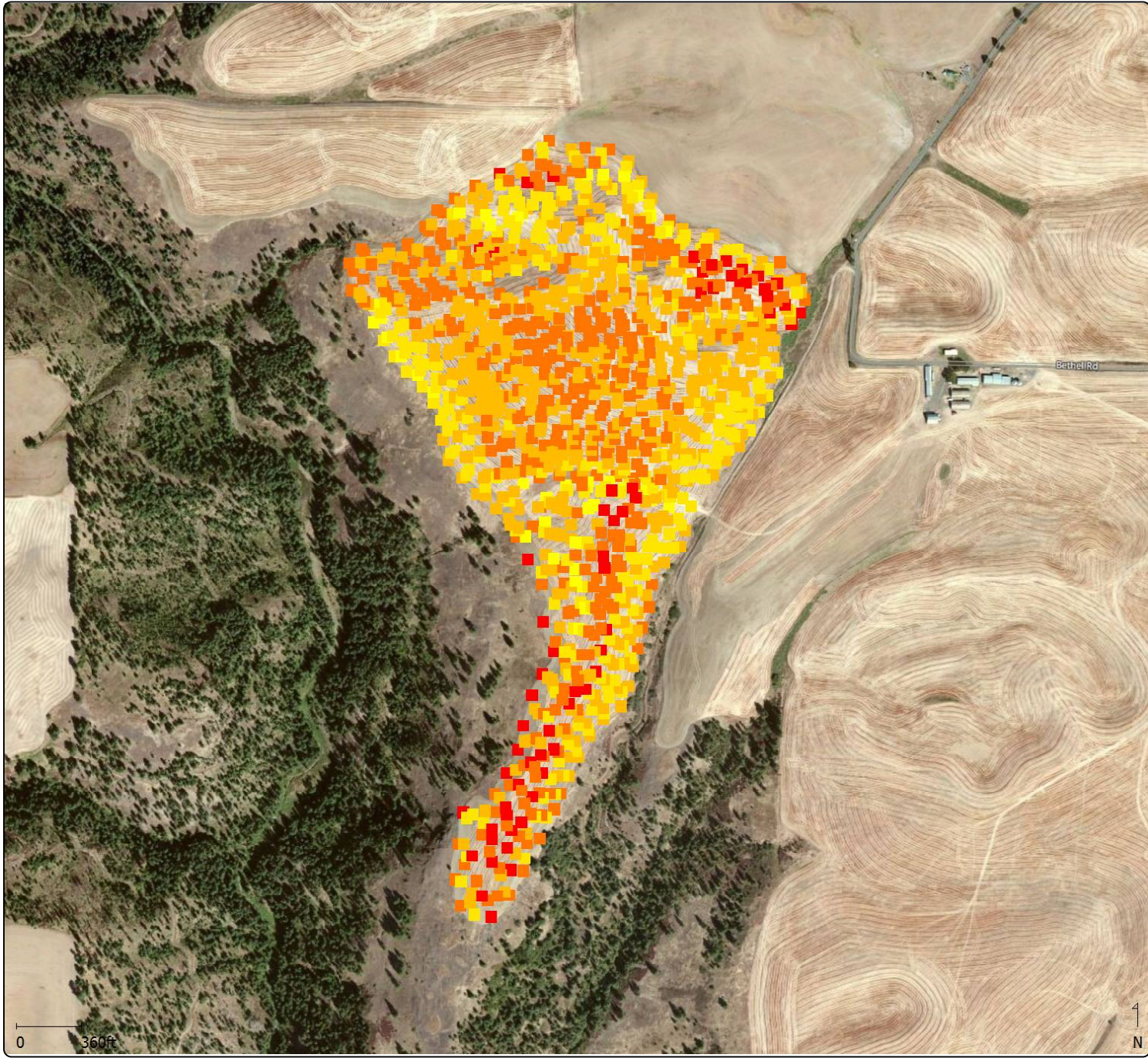


Protein Monitoring 2016 - Canyon(WheatUS16



Protein Content (%)

Green	17.00 - 18.00
Light Green	16.00 - 17.00
Yellow-Green	15.00 - 16.00
Yellow	14.00 - 15.00
Light Orange	13.00 - 14.00
Orange	12.00 - 13.00
Dark Orange	11.00 - 12.00
Red-Orange	10.00 - 11.00
Red	9.00 - 10.00